



Benham & Reeves

Principal Tower, Worship Street, EC2A

£808 per week, £3,500 per month + fees

 1 Bedroom  1 Bathroom  Furnished

1 bedroom apartment set on the 33rd floor in London's most iconic residential development - PRINCIPAL TOWER.

Please [click here](#) for full detail

Property features

1 bedroom apartment | Bespoke bathroom | Open Plan Reception | Kitchen integrated with Miele appliances | Furnished | EPC-B | Dedicated 24-hour Concierge, swimming pool, sauna, spa, gym | Excellent Transport links Nearby | Nearby Walking distance from Shoreditch

For more information about this property, please call our City branch on

020 7213 9700

Redress & Client Money Protection :

Benham and Reeves are members of The Property Ombudsman redress scheme and have Client Money protection with ARLA Propertymark. You can find more information on our website at <https://www.benhams.com/membership/>



Benham & Reeves



Principal Tower, Worship Street, EC2A

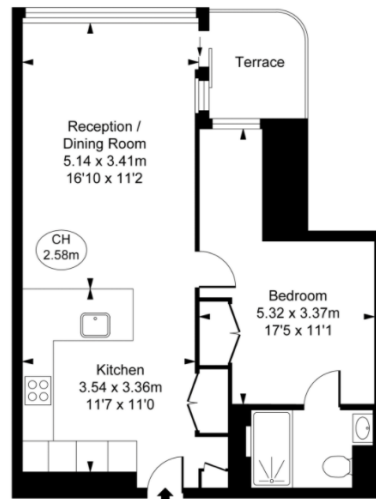
£808 per week, £3,500 per month + fees

www.benhams.com

Principal Tower,
Worship Street, EC2A
Approximate Gross Internal Area
48.40 sq m / 521 sq ft



(CH = Ceiling Heights)

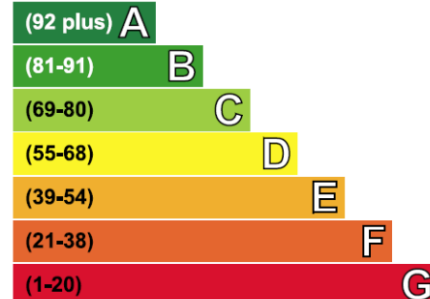


Thirty-Third Floor

This plan is not to scale. It is for guidance and not for valuation purposes.
All measurements and areas are approximate only, and have been prepared in accordance with the current edition of the RICS Code of Measuring Practice.
© Fulham Performance

Energy Efficiency Rating

Very energy efficient - lower running costs



	Current	Potential
	85	85

London branches open six days a week Mon - Sat

Canary Wharf | City | Colindale | Dartmouth Park | Ealing | Fulham
Hammersmith | Hampstead | Highgate | Hyde Park | Kensington | Kew
Knightsbridge | Nine Elms | Shoreditch | Southall | Surrey Quays
Wapping | Wembley | White City | Woolwich

International offices

China | Hong Kong SAR | India | Indonesia | Qatar | Malaysia | Middle East | Pakistan
Singapore | South Africa | Thailand | Turkey



Benham & Reeves