



Benham & Reeves

Thunderer Walk, Woolwich, SE18

£462 per week, £2,002 per month + fees

 Studio  1 Bathroom  Furnished

An immaculate studio apartment, furnished by an interior designer company, situated in a sought-after development with superb resident's facilities, close to the amenities of Woolwich. Within walking distance from Woolwich Arsenal DLR and BR Station.

Please [click here](#) for full detail

Property features

Brand new apartment | Studio apartment | Furnished | Balcony | 24hr concierge | EPC-B | 24hr residents gym | Swimming pool, sauna, steam room | Cinema room | Woolwich Arsenal DLR and BR Station

For more information about this property, please call our Woolwich branch on

020 8051 0700

Redress & Client Money Protection :

Benham and Reeves are members of The Property Ombudsman redress scheme and have Client Money protection with ARLA Propertymark. You can find more information on our website at <https://www.benhams.com/membership/>



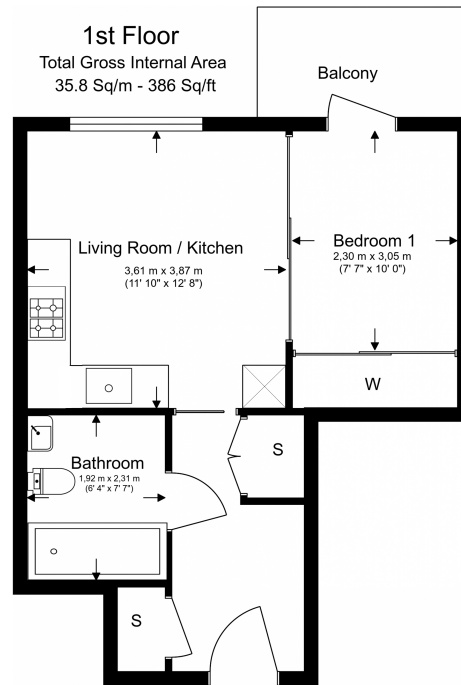
Benham & Reeves



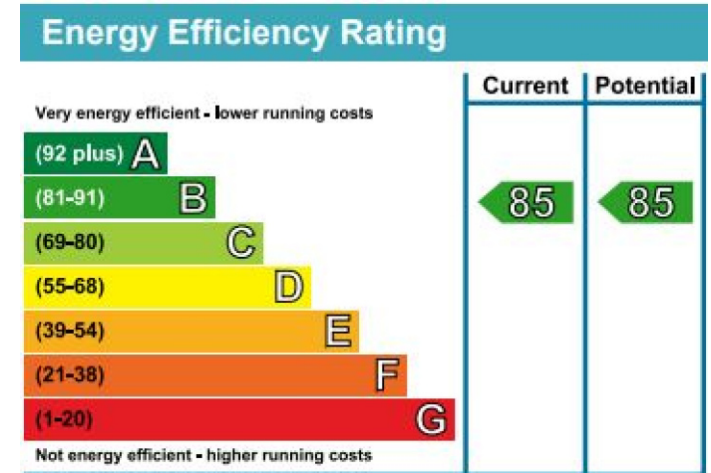
Thunderer Walk, Woolwich, SE18

£462 per week, £2,002 per month + fees

www.benhams.com



Floor Plan measurements are approximate and are for illustrative purposes only. While we do not doubt the floor plans accuracy we make no guarantee, warranty or representation as to the accuracy and completeness of the floor plan.



London branches open six days a week Mon - Sat

Canary Wharf | City | Colindale | Dartmouth Park | Ealing | Fulham
Hammersmith | Hampstead | Highgate | Hyde Park | Kensington | Kew
Knightsbridge | Nine Elms | Shoreditch | Southall | Surrey Quays
Wapping | Wembley | White City | Woolwich



International offices

China | Hong Kong SAR | India | Indonesia | Israel | Malaysia | Middle East | Pakistan
Qatar | Singapore | South Africa | Thailand | Turkey

Benham & Reeves