



Benham & Reeves

Royal Arsenal Riverside, Woolwich, SE18

£554 per week, £2,401 per month + fees

 2 Bedrooms  2 Bathrooms  Unfurnished

A contemporary spacious 6th floor apartment with a sizable private balcony set within a popular Riverside development, with excellent on-site facilities in the heart Woolwich. Close to an abundance of nearby travel stations. EPC-B

Please [click here](#) for full detail

Property features

2 Double Bedroom Apartment with Built in Wardrobe (6th Floor | Reception Room with Dining Area & Large Windows | Fully Fitted Integrated Kitchen with Well Known Appliances | Luxurious 2 Bathrooms (1 x En-Suite Shower Rooms & 1 x Famil | Area: 950 SqFt /River View / Utility Room / Long Hallway | EPC-B | Quality Furnished / Balcony - Terrace (300 SqFt Additionally | Air Ventilation / Double Glaze Windows | Resident Swimming Pool, Spa, Gym, Cinema and Lounge | Minutes to Woolwich DLR and upcoming Cross Rail

For more information about this property,
please call our Woolwich branch on

020 8051 0700

Redress & Client Money Protection :

Benham and Reeves are members of The Property Ombudsman redress scheme and have Client Money protection with ARLA Propertymark. You can find more information on our website at <https://www.benhams.com/membership/>



Benham & Reeves

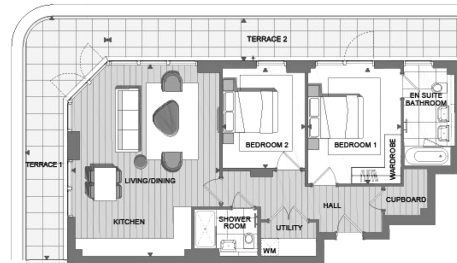


Royal Arsenal Riverside, Woolwich, SE18

£554 per week, £2,401 per month + fees

www.benhams.com

6th Floor
Approx gross internal area: 935sq/ft - 87sq/m



LIVING/DINING/KITCHEN	22'10" x 17'7"	6.95 x 5.36m	TERRACE 1	28'11" x 5'0"	8.80 x 1.52m
BEDROOM 1	13'9" x 11'1"	4.20 x 3.37m	TERRACE 2	46'11" x 5'0"	14.3 x 1.52m
BEDROOM 2	11'11" x 9'10"	3.63 x 3.00m			

Whilst every attempt has been made to ensure the accuracy of the floor plan contained here, measurements of doors, windows, rooms and any other items are approximate and no responsibility is taken for any error, omission, or mis-statement. This plan is for illustrative purposes only and should be used as such by any prospective purchaser. The services, systems and appliances shown have not been tested and no guarantee as to their operability or efficiency can be given.
Made with Metropix G2016

Score	Energy rating	Current	Potential
92+	A		
81-91	B	83 B	83 B
69-80	C		
55-68	D		
39-54	E		
21-38	F		
1-20	G		

London branches open six days a week Mon - Sat

Canary Wharf | City | Colindale | Dartmouth Park | Ealing | Fulham
Hammersmith | Hampstead | Highgate | Hyde Park | Kensington | Kew
Knightsbridge | Nine Elms | Shoreditch | Southall | Surrey Quays
Wapping | Wembley | White City | Woolwich

International offices

China | Hong Kong SAR | India | Indonesia | Qatar | Malaysia | Middle East | Pakistan
Singapore | South Africa | Thailand | Turkey

