



Benham & Reeves

Victory Parade, Woolwich, SE18

£438 per week, £1,900 per month + fees

🛏 1 Bedroom 🚿 1 Bathroom 🛋 Furnished

Contemporary furnished 6th floor apartment situated in a sought-after riverside development in Woolwich. Conveniently located next to Woolwich Arsenal Riverboat services and is less than a five-minute walk from Woolwich Arsenal DLR and National Rail stations.

Please [click here](#) for full detail

Property features

Open plan kitchen with integrated kitchen appliances | Cream carpet in bedroom | Wooden flooring throughout the living area and hallway | Furnished in high specs | Moments to DLR station | EPC-B | Private Balcony | Dining Area Is Bright And Spacious | Spacious | Nearby Woolwich Arsenal DLR and National Rail stations

For more information about this property,
please call our Woolwich branch on

020 8051 0700



Redress & Client Money Protection :
Benham and Reeves are members of The Property Ombudsman redress scheme and have Client Money protection with ARLA Propertymark.
You can find more information on our website at <https://www.benhams.com/membership/>

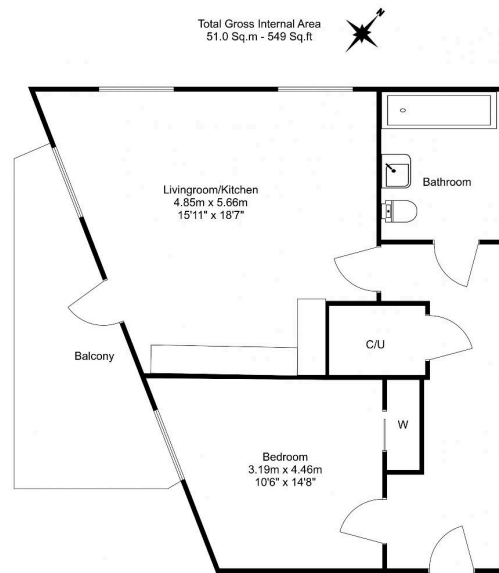
Benham & Reeves



Victory Parade, Woolwich, SE18

£438 per week, £1,900 per month + fees

www.benhams.com



Floor Plan measurements are approximate and are for illustrative purposes only. While we do not doubt the floor plans accuracy, we make no guarantee, warranty or representation as to the accuracy and completeness of the floor plan.

Score	Energy rating	Current	Potential
92+	A		
81-91	B	84 B	84 B
69-80	C		
55-68	D		
39-54	E		
21-38	F		
1-20	G		

London branches open six days a week Mon - Sat

Canary Wharf | City | Colindale | Dartmouth Park | Ealing | Fulham
Hammersmith | Hampstead | Highgate | Hyde Park | Kensington | Kew
Knightsbridge | Nine Elms | Shoreditch | Southall | Surrey Quays
Wapping | Wembley | White City | Woolwich

International offices

China | Hong Kong SAR | India | Indonesia | Qatar | Malaysia | Middle East | Pakistan
Singapore | South Africa | Thailand | Turkey



Benham & Reeves