



Benham & Reeves

The Courthouse, Westminster, SW1

£1,600 per week, £6,933 per month + fees

 3 Bedrooms  3 Bathrooms 
Furnished/UnFurnished

A luxury 3 bedroom apartment set in The Courthouse, a stylish development located on Horseferry Road close to the amenities of Westminster. The property spans 1,143 sq ft in space and is ideally located nearby several underground stations.

Please [click here](#) for full detail

Property features

3 Bedrooms | 3 Bathrooms | Spacious Open Plan Reception | Furn/Unfurn | Smartly integrated Kitchen | EPC-B | 1143 sq ft | Two Balconies, Secure Underground Parking | 24 Hour Concierge | Westminster, St James' Park & Victoria Stations

For more information about this property, please call our Knightsbridge branch on

020 7581 2112

Redress & Client Money Protection :

Benham and Reeves are members of The Property Ombudsman redress scheme and have Client Money protection with ARLA Propertymark. You can find more information on our website at <https://www.benhams.com/membership/>



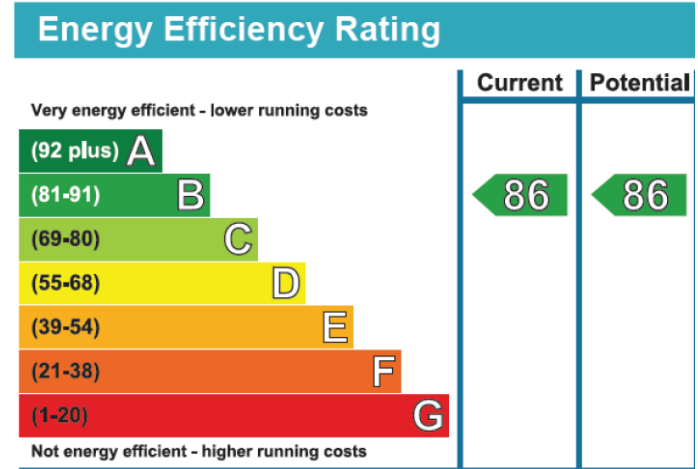
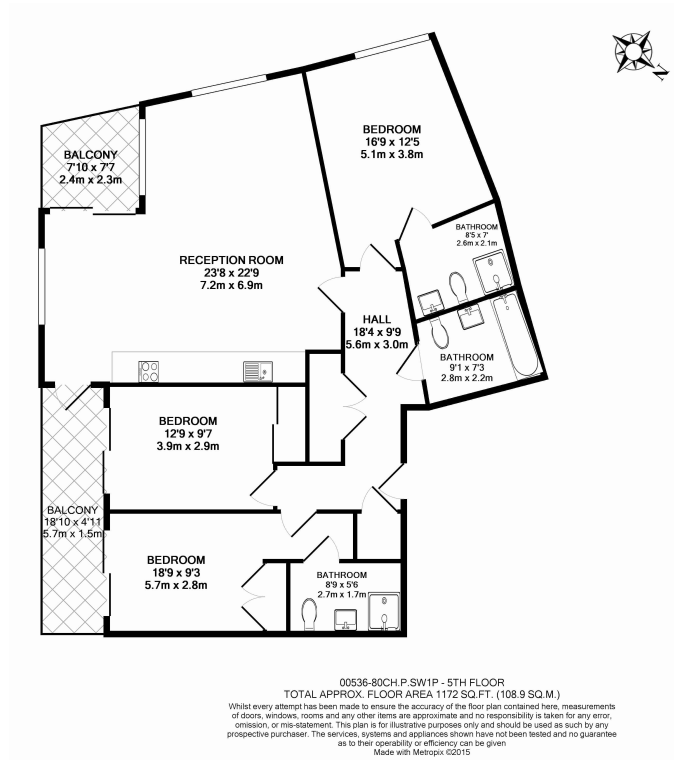
Benham & Reeves



The Courthouse, Westminster, SW1

£1,600 per week, £6,933 per month + fees

www.benhams.com



London branches open six days a week Mon - Sat

Canary Wharf | City | Colindale | Dartmouth Park | Ealing | Fulham
 Hammersmith | Hampstead | Highgate | Hyde Park | Kensington | Kew
 Knightsbridge | Nine Elms | Shoreditch | Southall | Surrey Quays
 Wapping | Wembley | White City | Woolwich

International offices

China | Hong Kong SAR | India | Indonesia | Qatar | Malaysia | Middle East | Pakistan
 Singapore | South Africa | Thailand | Turkey

