



Benham & Reeves

Great Peter Street, Westminster, SW1P

£950 per week, £4,117 per month + fees

 2 Bedrooms  2 Bathrooms  Furnished

A superb 785 sq ft TWO-BEDROOM 5th floor apartment with private BALCONY in 73 GREAT PETER STREET. Residents benefit from a daytime CONCIERGE & GYM. The property is situated in the heart of WESTMINSTER within minutes of Parliament Square & Victoria Street. ST. JAMES'S PARK STATION is a 5 minute walk.

Please [click here](#) for full detail

Property features

Prime Westminster Location | Daytime Concierge | Fitness Suite | 785 Sq Ft | Private Balcony | EPC-B | Furnished | 10 Minutes To Victoria Station | Minutes From Parliament Square | 8 Minutes St James's Park Station

For more information about this property, please call our Knightsbridge branch on

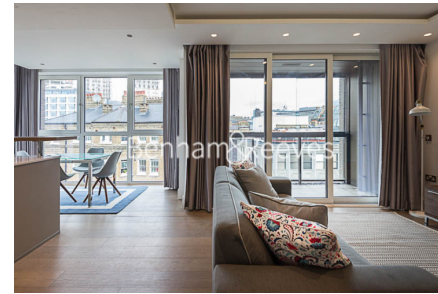
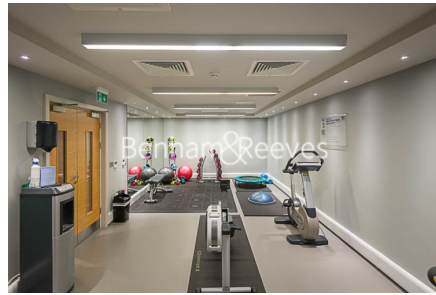
020 7581 2112

Redress & Client Money Protection :

Benham and Reeves are members of The Property Ombudsman redress scheme and have Client Money protection with ARLA Propertymark. You can find more information on our website at <https://www.benhams.com/membership/>



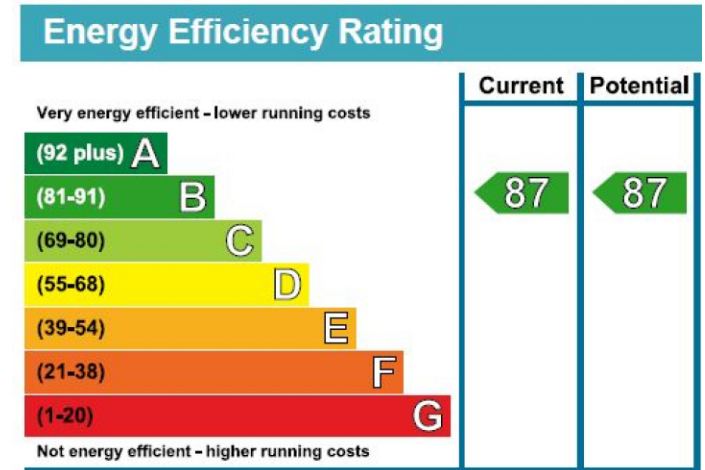
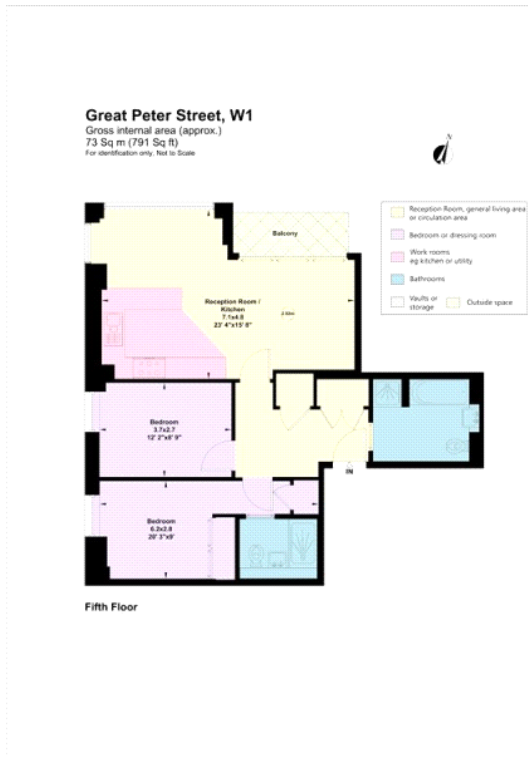
Benham & Reeves



Great Peter Street, Westminster, SW1P

£950 per week, £4,117 per month + fees

www.benhams.com



London branches open six days a week Mon - Sat

Canary Wharf | City | Colindale | Dartmouth Park | Ealing | Fulham
Hammersmith | Hampstead | Highgate | Hyde Park | Kensington | Kew
Knightsbridge | Nine Elms | Shoreditch | Southall | Surrey Quays
Wapping | Wembley | White City | Woolwich

International offices

China | Hong Kong SAR | India | Indonesia | Israel | Malaysia | Middle East | Pakistan
Qatar | Singapore | South Africa | Thailand | Turkey

