



Benham & Reeves

## Amen Lodge, Warwick Lane, EC4M

£877 per week, £3,800 per month + fees

 2 Bedrooms  1 Bathroom   
Furnished/UnFurnished

Available Now\*

Bright and spacious located in the heart of City within an easy walking distance of the Thames River and the Millennium Bridge. With excellent transport links nearby, including St Paul's, Blackfriars, Farringdon, and City Thameslink stations.

Please [click here](#) for full detail

## Property features

**Spacious 2-bedroom apartment | Bespoke bathroom | Open Plan Living Space | Fitted separate kitchen | Furnished/Unfurnished | EPC C | Dedicated on-site building manager | Exceptional location | Lift | Excellent transport links nearby**

For more information about this property,  
please call our City branch on

**020 7213 9700**

Redress & Client Money Protection :

Benham and Reeves are members of The Property Ombudsman redress scheme and have Client Money protection with ARLA Propertymark. You can find more information on our website at <https://www.benhams.com/membership/>



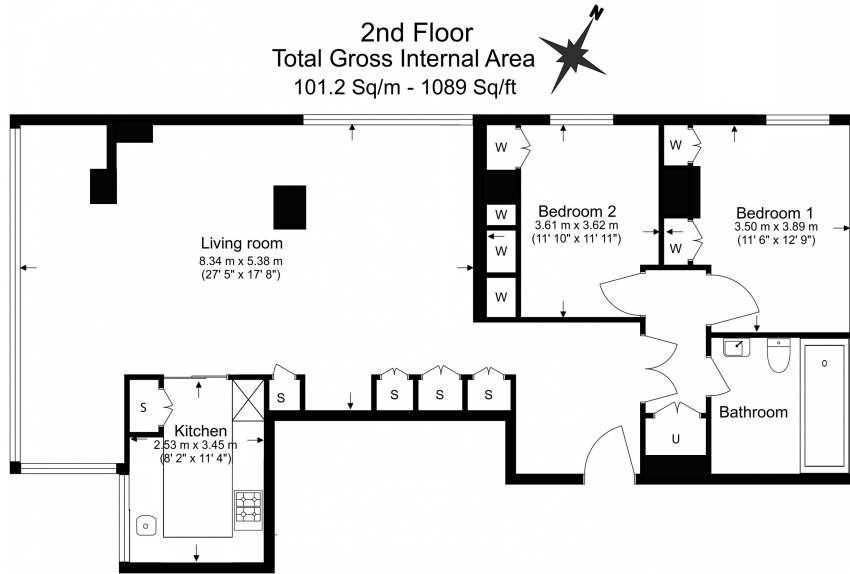
Benham & Reeves



# Amen Lodge, Warwick Lane, EC4M

£877 per week, £3,800 per month + fees

www.benhams.com



Benham & Reeves

Floor Plan measurements are approximate and are for illustrative purposes only. While we do not doubt the floor plans accuracy, we make no guarantee, warranty or representation as to the accuracy and completeness of the floor plan.

Score	Energy rating	Current	Potential
92+	A		
81-91	B		
69-80	C	70 C	77 C
55-68	D		
39-54	E		
21-38	F		
1-20	G		

## London branches open six days a week Mon - Sat

Canary Wharf | City | Colindale | Dartmouth Park | Ealing | Fulham  
Hammersmith | Hampstead | Highgate | Hyde Park | Kensington | Kew  
Knightsbridge | Nine Elms | Shoreditch | Southall | Surrey Quays  
Wapping | Wembley | White City | Woolwich

## International offices

China | Hong Kong SAR | India | Indonesia | Qatar | Malaysia | Middle East | Pakistan  
Singapore | South Africa | Thailand | Turkey



Benham & Reeves