



Benham & Reeves

Damac Tower, Vauxhall, SW8

£820 per week, £3,553 per month + fees

 1 Bedroom  1 Bathroom  Furnished

A modern, stylish 30th floor apartment with private Winter garden and stunning views over London. .Positioned next to Vauxhall Station with both Victoria and National Rail services.

Please [click here](#) for full detail

Property features

30th floor One bedroom | Furnished | Air cooling | Dishwasher | Winter Garden | EPC-B | 24 hour concierge | Swimming pool | Gym | Vauxhall and Nine Elms Stations

For more information about this property, please call our Nine Elms branch on

020 3282 3700

Redress & Client Money Protection :

Benham and Reeves are members of The Property Ombudsman redress scheme and have Client Money protection with ARLA Propertymark. You can find more information on our website at <https://www.benhams.com/membership/>



Benham & Reeves



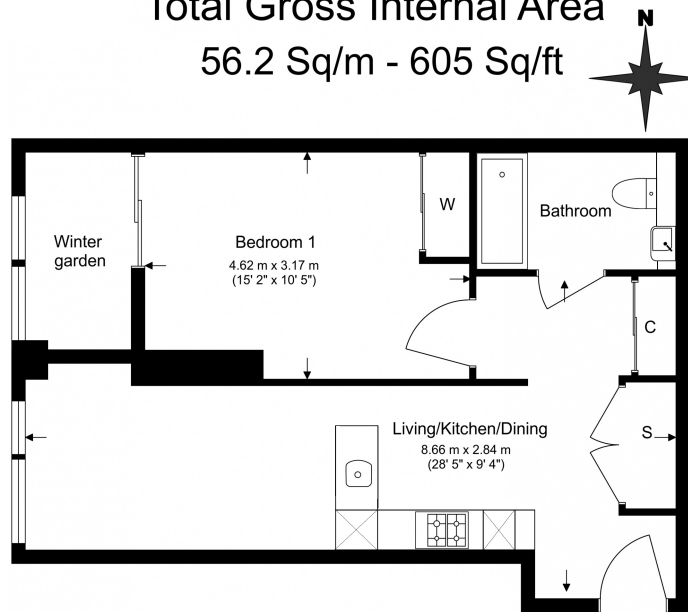
Damac Tower, Vauxhall, SW8

£820 per week, £3,553 per month + fees


www.benhams.com

Total Gross Internal Area

56.2 Sq/m - 605 Sq/ft



Floor Plan measurements are approximate and are for illustrative purposes only. While we do not doubt the floor plans accuracy, we make no guarantee, warranty or representation as to the accuracy and completeness of the floor plan.

Energy Efficiency Rating		
	Current	Potential
Very energy efficient - lower running costs		
(92-100) A		
(81-91) B		
(69-80) C	80	80
(55-68) D		
(39-54) E		
(21-38) F		
(1-20) G		
Not energy efficient - higher running costs		
England & Wales	EU Directive 2002/91/EC 	

London branches open six days a week Mon - Sat

Canary Wharf | City | Colindale | Dartmouth Park | Ealing | Fulham
 Hammersmith | Hampstead | Highgate | Hyde Park | Kensington | Kew
 Knightsbridge | Nine Elms | Shoreditch | Southall | Surrey Quays
 Wapping | Wembley | White City | Woolwich



International offices

China | Hong Kong SAR | India | Indonesia | Qatar | Malaysia | Middle East | Pakistan
 Singapore | South Africa | Thailand | Turkey

Benham & Reeves