



Benham & Reeves

Thames City, Vauxhall, SW8

£1,500 per week, £6,500 per month + fees

 3 Bedrooms  2 Bathrooms  Furnished

Bright large 12th floor apartment situated within a desirable luxury development, with best 5* facilities in Nine Elms. Ideally located a few minutes' walk from Vauxhall Station (Victoria Line) and Nine Elms Tube Station (Northern Line).

Please [click here](#) for full detail

Property features

Three double bedrooms | Two bathrooms | Air cooling | Repainted | 5* facilities | EPC-B | 24-hour concierge | Swimming Pool | Gym | Vauxhall Station

For more information about this property,
please call our Nine Elms branch on

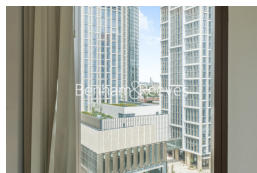
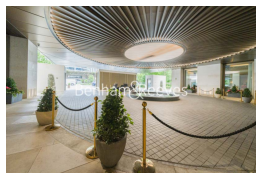
020 3282 3700

Redress & Client Money Protection :

Benham and Reeves are members of The Property Ombudsman redress scheme and have Client Money protection with ARLA Propertymark. You can find more information on our website at <https://www.benhams.com/membership/>



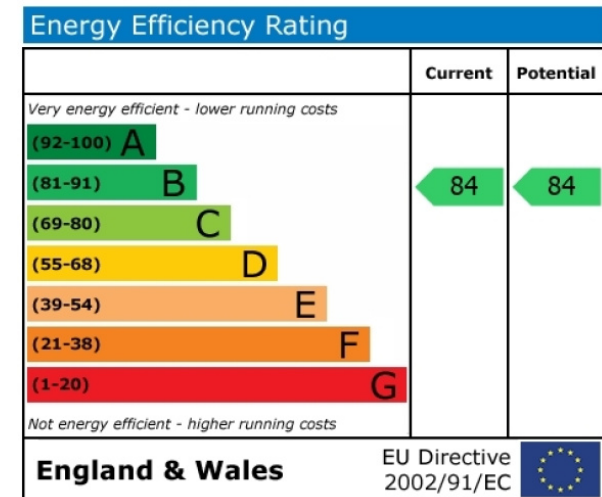
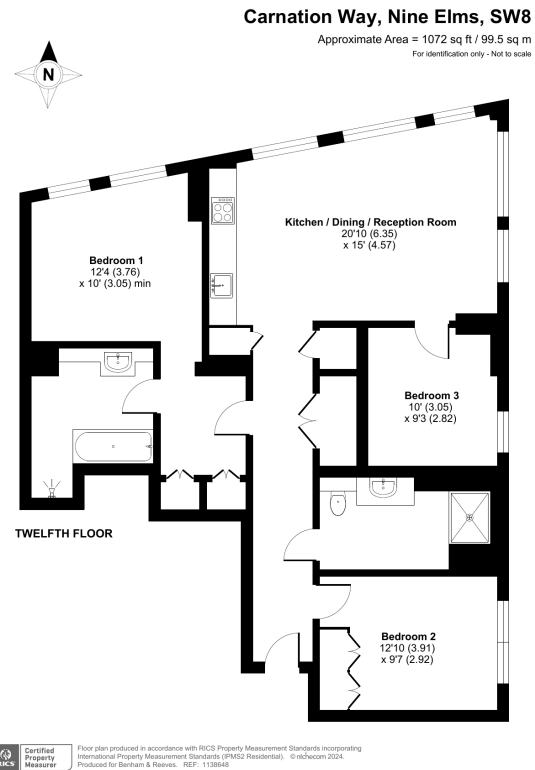
Benham & Reeves



Thames City, Vauxhall, SW8

£1,500 per week, £6,500 per month + fees

www.benhams.com



London branches open six days a week Mon - Sat

Canary Wharf | City | Colindale | Dartmouth Park | Ealing | Fulham
Hammersmith | Hampstead | Highgate | Hyde Park | Kensington | Kew
Knightsbridge | Nine Elms | Shoreditch | Southall | Surrey Quays
Wapping | Wembley | White City | Woolwich

International offices

China | Hong Kong SAR | India | Indonesia | Qatar | Malaysia | Middle East | Pakistan
Singapore | South Africa | Thailand | Turkey



Benham & Reeves