



Benham & Reeves

**Faulkner House, Tierney Lane, W6**

£577 per week, £2,500 per month + fees

 1 Bedroom    1 Bathroom    Furnished

Premier, fully furnished ground floor Manhattan apartment with air conditioning and high-end interior design finishes. Located within a sought-after development, with exceptional amenities ideally situated within walking distance from Hammersmith Underground Station, providing easy access to central London via multiple tube lines.

Please [click here](#) for full detail

## Property features

**Spacious Manhattan Studio with Built-In Wardrobe | Air Ventilation / Underfloor Heating / Air Conditioning | Fully Fitted Kitchen Integrated with Well-Known Appliances | Luxury Bathroom Features with White Marble Pearl Finish | Private Balcony | EPC- B | 24 Hr Concierge / 24 Hr Security / Communal Gardens | Residents Gym, Snooker room, Swimming pool, Screening | Close to Local Amenities | Step-away from Hammersmith Station**

For more information about this property, please call our Hammersmith branch on

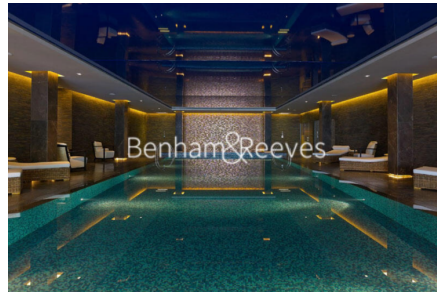
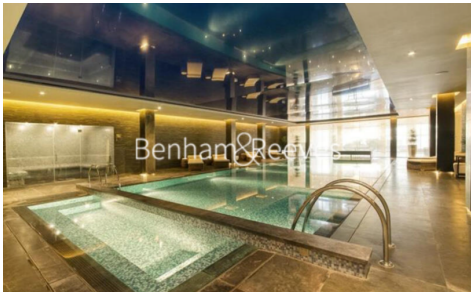
**020 8600 0960**

Redress & Client Money Protection :

Benham and Reeves are members of The Property Ombudsman redress scheme and have Client Money protection with ARLA Propertymark. You can find more information on our website at <https://www.benhams.com/membership/>



**Benham & Reeves**

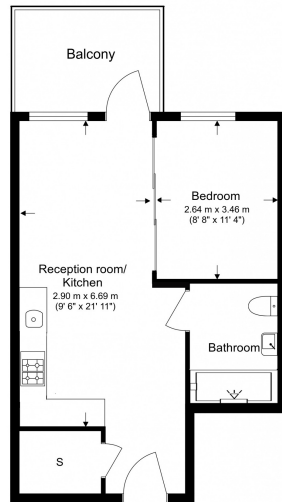


# Faulkner House, Tierney Lane, W6

£577 per week, £2,500 per month + fees

www.benhams.com

Ground floor  
Total Gross Internal Area  
42.1 Sq/m - 453 Sq/ft



Benham & Reeves

Floor Plan measurements are approximate and are for illustrative purposes only. While we do not doubt the floor plans accuracy, we make no guarantee, warranty or representation as to the accuracy and completeness of the floor plan.

| Score | Energy rating | Current | Potential |
|-------|---------------|---------|-----------|
| 92+   | A             |         |           |
| 81-91 | B             | 83 B    | 83 B      |
| 69-80 | C             |         |           |
| 55-68 | D             |         |           |
| 39-54 | E             |         |           |
| 21-38 | F             |         |           |
| 1-20  | G             |         |           |

## London branches open six days a week Mon - Sat

Canary Wharf | City | Colindale | Dartmouth Park | Ealing | Fulham  
Hammersmith | Hampstead | Highgate | Hyde Park | Kensington | Kew  
Knightsbridge | Nine Elms | Shoreditch | Southall | Surrey Quays  
Wapping | Wembley | White City | Woolwich

## International offices

China | Hong Kong SAR | India | Indonesia | Qatar | Malaysia | Middle East | Pakistan  
Singapore | South Africa | Thailand | Turkey



Benham & Reeves