



Benham & Reeves

Faulkner House, Tierney Lane, W6

£923 per week, £4,000 per month + fees

 2 Bedrooms  2 Bathrooms  Unfurnished

High Specification, air-conditioned 4th floor apartment with River views situated in a new modern riverside development by Mount Anvil. Conveniently located a two-minute walk from Hammersmith Station (District, Piccadilly, and Hammersmith & City lines).

Please [click here](#) for full detail

Property features

Two Double Bedroom with Built-in Wardrobes (4th Floor) | Internal Area: 946 Sq Ft Internally /Furnished | Step-away from Bus routes 9,23, 27,306,N9,N27 | Luxury Bathroom Features with Dark Brown Pearl Finish | Designable Fully Fitted Open Plan Kitchen | EPC-B | Multi-channel Underfloor Heating / Air Ventilation System | 24 Hour Concierge with high standard service and security | Walking distance to shopping malls and banks and one right | Nearby Hammersmith Underground Station

For more information about this property,
please call our Hammersmith branch on

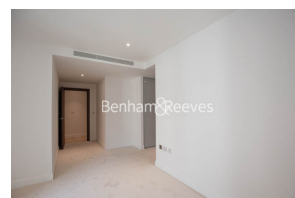
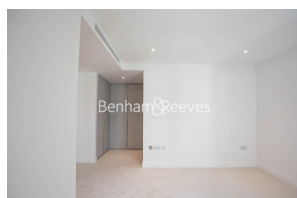
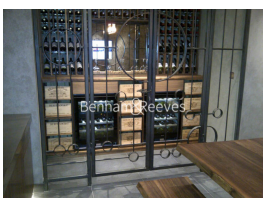
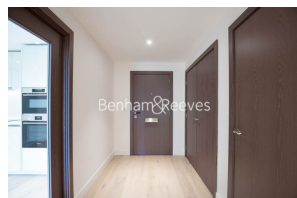
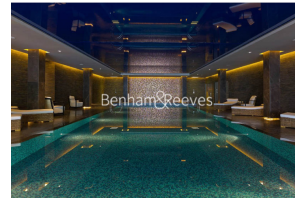
020 8600 0960

Redress & Client Money Protection :

Benham and Reeves are members of The Property Ombudsman redress scheme and have Client Money protection with ARLA Propertymark. You can find more information on our website at <https://www.benhams.com/membership/>



Benham & Reeves



Faulkner House, Tierney Lane, W6

£923 per week, £4,000 per month + fees

www.benhams.com

Score	Energy rating	Current	Potential
92+	A		
81-91	B	86 B	86 B
69-80	C		
55-68	D		
39-54	E		
21-38	F		
1-20	G		

London branches open six days a week Mon - Sat

Canary Wharf | City | Colindale | Dartmouth Park | Ealing | Fulham
Hammersmith | Hampstead | Highgate | Hyde Park | Kensington | Kew
Knightsbridge | Nine Elms | Shoreditch | Southall | Surrey Quays
Wapping | Wembley | White City | Woolwich

International offices

China | Hong Kong SAR | India | Indonesia | Qatar | Malaysia | Middle East | Pakistan
Singapore | South Africa | Thailand | Turkey

