



Benham & Reeves

Harbour Reach, The Boulevard, Imperial Wharf, SW6

£785 per week, £3,400 per month + fees

🛏️ 2 Bedrooms 🚿 2 Bathrooms 🛋️ Part-furnished

A stunning apartment set on the 9th floor of Harbour Reach, situated within the landmark Imperial Wharf development by St George.

Please [click here](#) for full detail

Property features

Top floor 2 bedroom apartment | Partly furnished with high quality furniture | Gym and 24 hr concierge | Landscaped gardens | 2 x balconies | EPC B | Lift access, 9th floor | large reception | Ample natural light | Near Imperial Wharf station

For more information about this property, please call our Fulham branch on

020 7348 7620

Redress & Client Money Protection :

Benham and Reeves are members of The Property Ombudsman redress scheme and have Client Money protection with ARLA Propertymark. You can find more information on our website at <https://www.benhams.com/membership/>



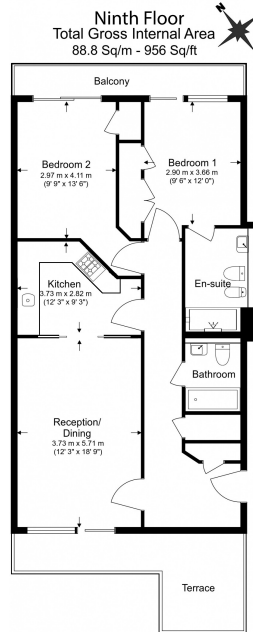
Benham & Reeves



Harbour Reach, The Boulevard, Imperial Wharf, SW6

www.benhams.com

£785 per week, £3,400 per month + fees



Benham & Reeves
Floor Plan measurements are approximate and are for illustrative purposes only. While we do not doubt the floor plans accuracy, we make no guarantee, warranty or representation as to the accuracy and completeness of the floor plan.

[See how to improve this property's energy efficiency.](#)

Score	Energy rating	Current	Potential
92+	A		
81-91	B	81 B	81 B
69-80	C		
55-68	D		
39-54	E		
21-38	F		
1-20	G		

London branches open six days a week Mon - Sat

Canary Wharf | City | Colindale | Dartmouth Park | Ealing | Fulham
Hammersmith | Hampstead | Highgate | Hyde Park | Kensington | Kew
Knightsbridge | Nine Elms | Shoreditch | Southall | Surrey Quays
Wapping | Wembley | White City | Woolwich

International offices

China | Hong Kong SAR | India | Indonesia | Qatar | Malaysia | Middle East | Pakistan
Singapore | South Africa | Thailand | Turkey



Benham & Reeves