



Benham & Reeves

Temple Fortune Lane, Temple fortune, NW11

£427 per week, £1,850 per month + fees

🚪 2 Bedrooms 🚿 2 Bathrooms 🛋️ Furnished

A remarkable 2nd floor apartment set in a purpose-built block in NW11. Nearby Temple Fortune shops and Golders Green Tube station. EPC-B

Please [click here](#) for full detail

Property features

Two Double Bedrooms | Two Bathrooms | Fitted Wardrobes | Open planned Kitchen | Second Floor | EPC-B | Modern interior throughout | Moments from Temple fortune shops | Wooden Flooring | Nearby Golders Green Tube Station

For more information about this property, please call our Hampstead branch on

020 7435 9681



Redress & Client Money Protection :
Benham and Reeves are members of The Property Ombudsman redress scheme and have Client Money protection with ARLA Propertymark.
You can find more information on our website at <https://www.benham.com/membership/>

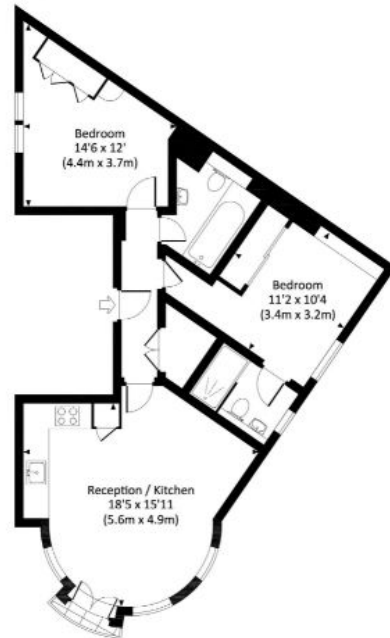
Benham & Reeves



Temple Fortune Lane, Temple fortune, NW11

£427 per week, £1,850 per month + fees

www.benhams.com



SECOND FLOOR

Score	Energy rating	Current	Potential
92+	A		
81-91	B	84 B	84 B
69-80	C		
55-68	D		
39-54	E		
21-38	F		
1-20	G		

London branches open six days a week Mon - Sat

Canary Wharf | City | Colindale | Dartmouth Park | Ealing | Fulham
 Hammersmith | Hampstead | Highgate | Hyde Park | Kensington | Kew
 Knightsbridge | Nine Elms | Shoreditch | Southall | Surrey Quays
 Wapping | Wembley | White City | Woolwich

International offices

China | Hong Kong SAR | India | Indonesia | Qatar | Malaysia | Middle East | Pakistan
 Singapore | South Africa | Thailand | Turkey

