



Benham & Reeves

The Knightsbridge Apartments, SW1

£2,250 per week, £9,750 per month + fees

 1 Bedroom  1 Bathroom  Furnished

An exquisite 803 sq ft ONE-BEDROOM apartment in the highly-exclusive KNIGHTSBRIDGE APARTMENTS development opposite Hyde Park. Residents of this luxury building enjoy 24-Hr Concierge, a superb Health Club with SWIMMING POOL, Business Centre, landscaped gardens and a prestigious location near SLOANE STREET.

Please [click here](#) for full detail

Property features

For more information about this property, please call our Knightsbridge branch on

020 7581 2112

Redress & Client Money Protection :
Benham and Reeves are members of The Property Ombudsman redress scheme and have Client Money protection with ARLA Propertymark.
You can find more information on our website at <https://www.benhams.com/membership/>



Benham & Reeves

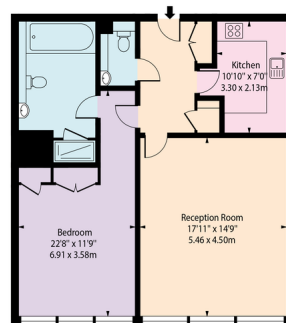


The Knightsbridge Apartments, SW1

£2,250 per week, £9,750 per month + fees

www.benhams.com

Knightsbridge London, SW7



Fourth Floor

Approx Gross Internal Area 803 Sq Ft - 74.60 Sq M

For Illustration Purposes Only - Not To Scale Floor Plan by www.epixandplans.com Ref: No.0055
This floor plan should be used as a general outline for guidance only. Any intending purchaser or lessee should satisfy themselves by inspection, searches, enquiries and full survey as to the correctness of each statement. Any areas, measurements or distances quoted are approximate and should not be used to value a property or be the basis of any sale or let.

London branches open six days a week Mon - Sat

Canary Wharf | City | Colindale | Dartmouth Park | Ealing | Fulham
Hammersmith | Hampstead | Highgate | Hyde Park | Kensington | Kew
Knightsbridge | Nine Elms | Shoreditch | Southall | Surrey Quays
Wapping | Wembley | White City | Woolwich

International offices

China | Hong Kong SAR | India | Indonesia | Qatar | Malaysia | Middle East | Pakistan
Singapore | South Africa | Thailand | Turkey



Benham & Reeves