



Benham & Reeves

Marine Wharf, Surrey Quays SE16

£176 per week, £762 per month + fees

 3 Bedrooms  2 Bathrooms  Furnished

Bright and spacious apartment presented in Immaculate condition throughout, situated in a vibrant popular development with parking available under separate negotiation. With easy access to Surrey Quays overground and Canada Water underground stations, EPC-B rating.

Please [click here](#) for full detail

Property features

Three Bedrooms - Two bathrooms Apartment | Two private balconies with views | Floor to Ceiling Windows | A communal garden on the 1st floor is part of a well-maintai | Bright and Spacious offering | EPC-B | Private Resident Gym, 24hr Concierge | Parking Available Separately | Onsite grocery stores, Popular Italian Deli and Café. Nearby | Surrey Quays Station for Access into Shoreditch and City

For more information about this property, please call our Surrey Quays branch on

020 7740 3050

Redress & Client Money Protection :

Benham and Reeves are members of The Property Ombudsman redress scheme and have Client Money protection with ARLA Propertymark. You can find more information on our website at <https://www.benhams.com/membership/>



Benham & Reeves

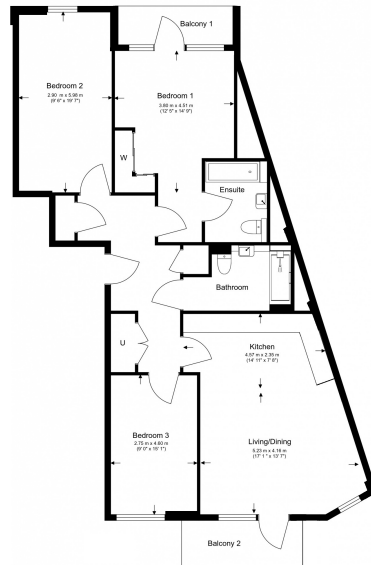


Marine Wharf, Surrey Quays SE16

£176 per week, £762 per month + fees

www.benhams.com

Total Gross Internal Area
109.3 Sq/m - 1177 Sq/ft



Floor Plan measurements are approximate and are for illustrative purposes only. While we do not doubt the floor plans accuracy, we make no guarantee, warranty or representation as to the accuracy and completeness of the floor plan.

Score	Energy rating	Current	Potential
92+	A		
81-91	B	84 B	84 B
69-80	C		
55-68	D		
39-54	E		
21-38	F		
1-20	G		

London branches open six days a week Mon - Sat

Canary Wharf | City | Colindale | Dartmouth Park | Ealing | Fulham
Hammersmith | Hampstead | Highgate | Hyde Park | Kensington | Kew
Knightsbridge | Nine Elms | Shoreditch | Southall | Surrey Quays
Wapping | Wembley | White City | Woolwich

International offices

China | Hong Kong SAR | India | Indonesia | Qatar | Malaysia | Middle East | Pakistan
Singapore | South Africa | Thailand | Turkey

