



Benham & Reeves

Tarves Way, Surrey Quays, SE10

£485 per week, £2,102 per month + fees

 2 Bedrooms  2 Bathrooms  Furnished

SPACIOUS two bedroom apartment in this popular development within easy walking distance of Greenwich DLR, main line station and Greenwich town centre.

Please [click here](#) for full detail

Property features

Two double bedrooms | Two Bathrooms | Trendy Cafes, Bars and Restaurants On Your Doorstep | Greenwich DLR and Railway a few steps away | Integrated Kitchen Appliances | EPC-C | Open Plan Reception with Laminate Flooring | Easy access to Canary Wharf, Bank & London Bridge | Private Balcony | Moments To Greenwich Town Centre & Thames River

For more information about this property, please call our Surrey Quays branch on

020 7740 3050



Redress & Client Money Protection :

Benham and Reeves are members of The Property Ombudsman redress scheme and have Client Money protection with ARLA Propertymark. You can find more information on our website at <https://www.benhams.com/membership/>

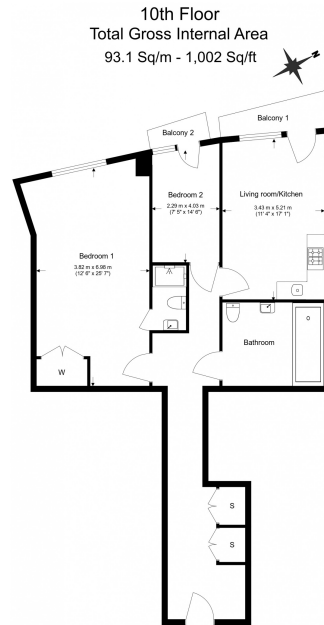
Benham & Reeves



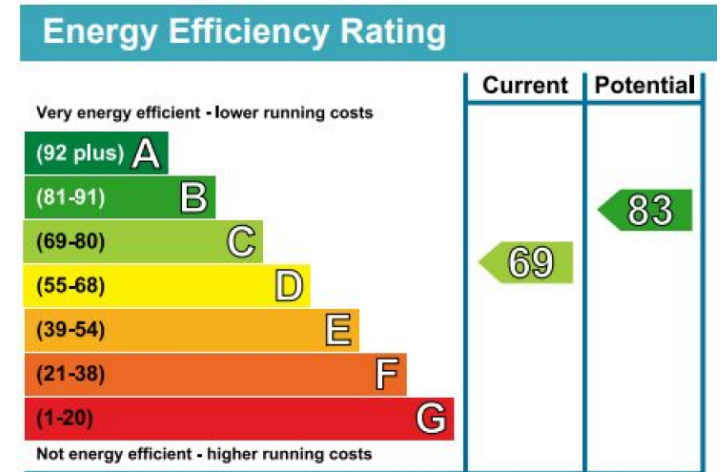
Tarves Way, Surrey Quays, SE10

£485 per week, £2,102 per month + fees

www.benhams.com



Floor Plan measurements are approximate and are for illustrative purposes only. While we do not doubt the floor plans accuracy, we make no guarantee, warranty or representation as to the accuracy and completeness of the floor plan.



London branches open six days a week Mon - Sat

Canary Wharf | City | Colindale | Dartmouth Park | Ealing | Fulham
Hammersmith | Hampstead | Highgate | Hyde Park | Kensington | Kew
Knightsbridge | Nine Elms | Shoreditch | Southall | Surrey Quays
Wapping | Wembley | White City | Woolwich

International offices

China | Hong Kong SAR | India | Indonesia | Qatar | Malaysia | Middle East | Pakistan
Singapore | South Africa | Thailand | Turkey

