



Benham & Reeves

**Boydell Court, St John's Wood, NW8**

£1,300 per week, £5,633 per month + fees

 3 Bedrooms    3 Bathrooms    Furnished

An elegant large first floor apartment set in a well-maintained purpose-built block, with off street parking and excellent portorage, located in the prestigious St John's Wood. The property is ideally situated close to Swiss Cottage station (Jubilee Line).

Please [click here](#) for full detail

## Property features

**3 Bedrooms | 3 Bathrooms | Reception Room | Furnished | Fitted Kitchen | EPC-E | Gated Development , Interior Design | 24 Hour Concierge | Nearby Swiss Cottage (Jubilee Line)Station**

For more information about this property,  
please call our Hampstead branch on

**020 7435 9681**

Redress & Client Money Protection :

Benham and Reeves are members of The Property Ombudsman redress scheme and have Client Money protection with ARLA Propertymark. You can find more information on our website at <https://www.benhams.com/membership/>



Benham & Reeves

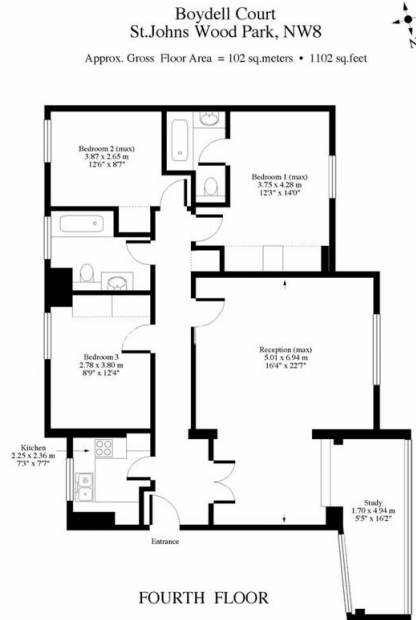




# Boydell Court, St John's Wood, NW8

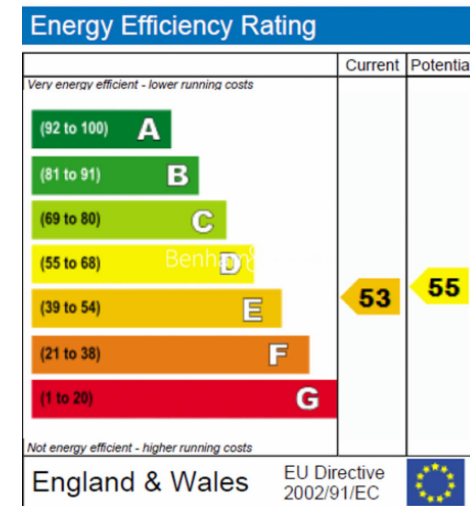
£1,300 per week, £5,633 per month + fees

www.benhams.com



For illustrative purposes only. Not to scale. Prepared by Swan Photography 01435 863908

94BCSWP



## London branches open six days a week Mon - Sat

Canary Wharf | City | Colindale | Dartmouth Park | Ealing | Fulham  
Hammersmith | Hampstead | Highgate | Hyde Park | Kensington | Kew  
Knightsbridge | Nine Elms | Shoreditch | Southall | Surrey Quays  
Wapping | Wembley | White City | Woolwich

## International offices

China | Hong Kong SAR | India | Indonesia | Qatar | Malaysia | Middle East | Pakistan  
Singapore | South Africa | Thailand | Turkey



Benham & Reeves