



Benham & Reeves

Belvedere Garden, Southbank Place, SE1

£1,731 per week, £7,500 per month + fees

 2 Bedrooms  2 Bathrooms  Furnished

Luxury apartment set on the 7th floor in one of London's most desirable developments - Southbank Place, boasting spectacular views over the Jubilee Gardens, The London Eye and across the River Thames to Westminster and the City of London.

Please [click here](#) for full detail

Property features

Luxury Two Bedroom Apartment | Bespoke Bathroom & Ensuite Shower Room | Exceptional views of the London Eye, Jubilee Gardens | Open Plan Living Space | Furnished | EPC-B | Kitchen Integrated with Miele Appliances | 24-Hour 5* Concierge & Security/Private Terrace | Residents Lounge, Conference room, Gym, Sauna | Waterloo Underground Station Nearby

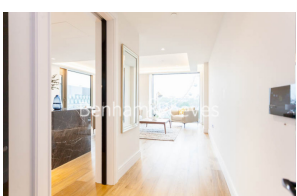
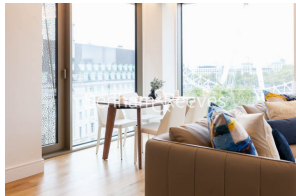
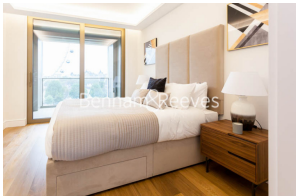
For more information about this property, please call our City branch on

020 7213 9700



Redress & Client Money Protection :
Benham and Reeves are members of The Property Ombudsman redress scheme and have Client Money protection with ARLA Propertymark.
You can find more information on our website at <https://www.benhams.com/membership/>

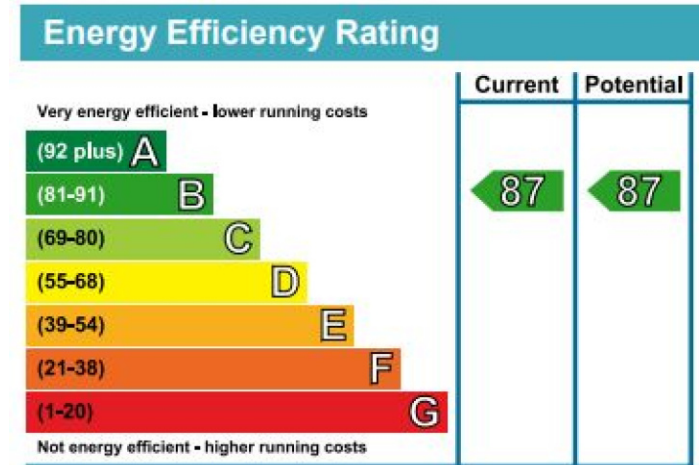
Benham & Reeves



Belvedere Garden, Southbank Place, SE1

£1,731 per week, £7,500 per month + fees

www.benhams.com



London branches open six days a week Mon - Sat

Canary Wharf | City | Colindale | Dartmouth Park | Ealing | Fulham
Hammersmith | Hampstead | Highgate | Hyde Park | Kensington | Kew
Knightsbridge | Nine Elms | Shoreditch | Southall | Surrey Quays
Wapping | Wembley | White City | Woolwich



International offices

China | Hong Kong SAR | India | Indonesia | Qatar | Malaysia | Middle East | Pakistan
Singapore | South Africa | Thailand | Turkey