



Benham & Reeves

**Accolade Avenue, Southall, UB1**

£474 per week, £2,054 per month + fees

 2 Bedrooms    2 Bathrooms    Furnished

Spacious, stylish 4th floor apartment situated within an exciting biodiverse development in West London, a short walk from Southall Station (Zone 4).

Please [click here](#) for full detail

## Property features

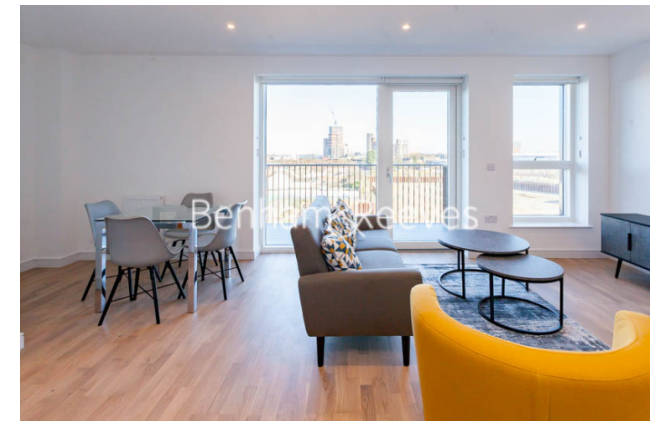
**2 Bedrooms | Concierge | Gym | Cinema room | Balcony | EPC-B | Residents lounge | Wood floors | Close to fast transport connections | Nearby Southall Station**

For more information about this property, please call our Southall branch on

**020 8051 0800**

Redress & Client Money Protection :

Benham and Reeves are members of The Property Ombudsman redress scheme and have Client Money protection with ARLA Propertymark. You can find more information on our website at <https://www.benhamandreeves.com/membership/>



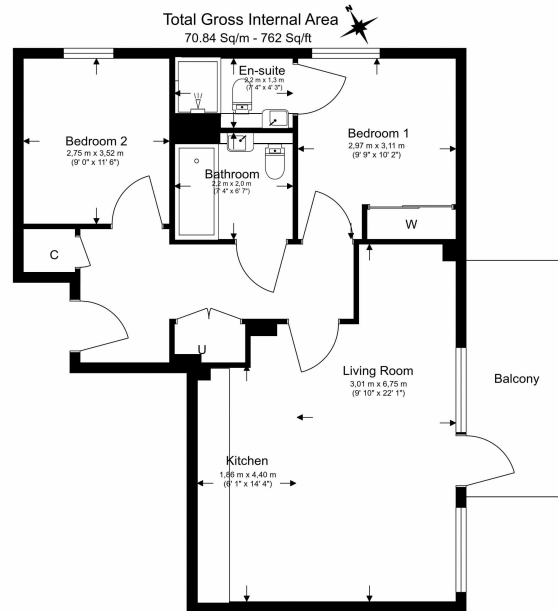
**Benham & Reeves**



# Accolade Avenue, Southall, UB1

£474 per week, £2,054 per month + fees

www.benhams.com



Floor Plan measurements are approximate and are for illustrative purposes only. While we do not doubt the floor plans accuracy, we make no guarantee, warranty or representation as to the accuracy and completeness of the floor plan.

Score	Energy rating	Current	Potential
92+	A		
81-91	B	84   B	84   B
69-80	C		
55-68	D		
39-54	E		
21-38	F		
1-20	G		

## London branches open six days a week Mon - Sat

Canary Wharf | City | Colindale | Dartmouth Park | Ealing | Fulham  
 Hammersmith | Hampstead | Highgate | Hyde Park | Kensington | Kew  
 Knightsbridge | Nine Elms | Shoreditch | Southall | Surrey Quays  
 Wapping | Wembley | White City | Woolwich

## International offices

China | Hong Kong SAR | India | Indonesia | Qatar | Malaysia | Middle East | Pakistan  
 Singapore | South Africa | Thailand | Turkey

