



Benham & Reeves

Greenleaf Walk, Southall, UB1

£485 per week, £2,102 per month + fees

 2 Bedrooms  2 Bathrooms  Furnished

Spacious open and bright 6th floor apartment situated in an exciting development surrounded by parkland. Perfectly positioned for the Elizabeth line, Canary Wharf and Heathrow airport.

Please [click here](#) for full detail

Property features

Concierge | Gym | Cinema room | Residents lounge | 6th Floor | EPC-B | Balcony | Wood Floor | Southall amenities | Southall British Rail Station

For more information about this property, please call our Southall branch on

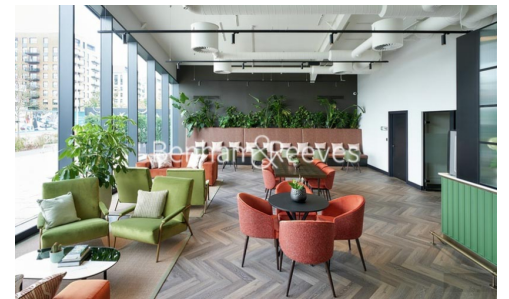
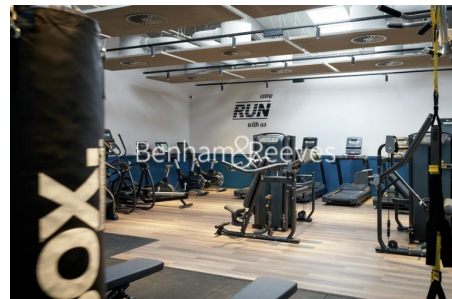
020 8051 0800

Redress & Client Money Protection :

Benham and Reeves are members of The Property Ombudsman redress scheme and have Client Money protection with ARLA Propertymark. You can find more information on our website at <https://www.benhams.com/membership/>



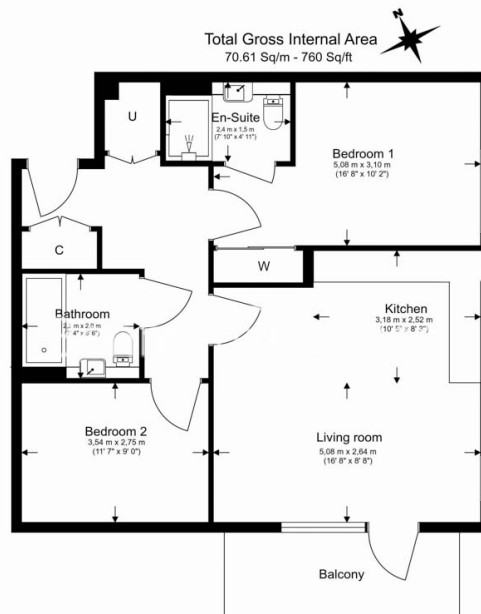
Benham & Reeves



Greenleaf Walk, Southall, UB1

£485 per week, £2,102 per month + fees

www.benhams.com



Floor Plan measurements are approximate and are for illustrative purposes only. While we do not doubt the floor plans accuracy, we make no guarantee, warranty or representation as to the accuracy and completeness of the floor plan.

Score	Energy rating	Current	Potential
92+	A		
81-91	B	85 B	85 B
69-80	C		
55-68	D		
39-54	E		
21-38	F		
1-20	G		

London branches open six days a week Mon - Sat

Canary Wharf | City | Colindale | Dartmouth Park | Ealing | Fulham
 Hammersmith | Hampstead | Highgate | Hyde Park | Kensington | Kew
 Knightsbridge | Nine Elms | Shoreditch | Southall | Surrey Quays
 Wapping | Wembley | White City | Woolwich

International offices

China | Hong Kong SAR | India | Indonesia | Israel | Malaysia | Middle East | Pakistan
 Qatar | Singapore | South Africa | Thailand | Turkey

