



Benham & Reeves

**Accolade Avenue, Southall, UB1**

£647 per week, £2,804 per month + fees

 3 Bedrooms    2 Bathrooms    Furnished

This stunning, large top floor apartment, with parking, is situated an exciting development in West London with views overlooking landscaped gardens and surrounding parkland. A brief walk from Southall Station.

Please [click here](#) for full detail

## Property features

**Underground parking | Concierge | Gym | Cinema room | Residents lounge | EPC-B | Terrace | Wood floors | Southall British Rail Station**

For more information about this property, please call our Southall branch on

**020 8051 0800**

Redress & Client Money Protection :

Benham and Reeves are members of The Property Ombudsman redress scheme and have Client Money protection with ARLA Propertymark. You can find more information on our website at <https://www.benhams.com/membership/>



Benham & Reeves

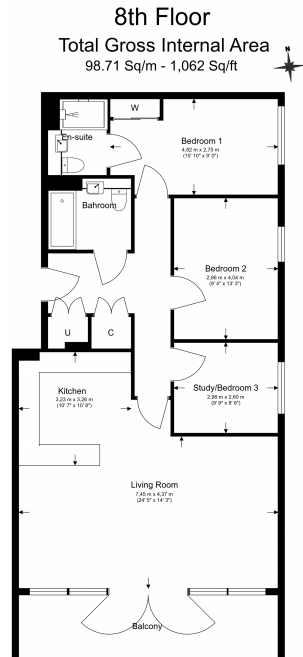




# Accolade Avenue, Southall, UB1

£647 per week, £2,804 per month + fees

www.benhams.com



Floor Plan measurements are approximate and are for illustrative purposes only. While we do not doubt the floor plans accuracy we make no guarantee, warranty or representation as to the accuracy and completeness of the floor plan.

Score	Energy rating	Current	Potential
92+	A		
81-91	B	83 B	83 B
69-80	C		
55-68	D		
39-54	E		
21-38	F		
1-20	G		

## London branches open six days a week Mon - Sat

Canary Wharf | City | Colindale | Dartmouth Park | Ealing | Fulham  
Hammersmith | Hampstead | Highgate | Hyde Park | Kensington | Kew  
Knightsbridge | Nine Elms | Shoreditch | Southall | Surrey Quays  
Wapping | Wembley | White City | Woolwich



## International offices

China | Hong Kong SAR | India | Indonesia | Qatar | Malaysia | Middle East | Pakistan  
Singapore | South Africa | Thailand | Turkey