



Benham & Reeves

Cedrus Avenue, Southall, UB1

£485 per week, £2,102 per month + fees

 2 Bedrooms  2 Bathrooms  Furnished

A desirable 4th floor apartment situated in an exciting bio-diverse development in West London, surrounded by landscaped gardens and parkland. Southall Station (Zone 4) is just a short walk away and is a strategic stop on the new super-fast Elizabeth Line.

Please [click here](#) for full detail

Property features

2 Bedrooms | Concierge | Gym | Cinema room | Residents Lounge | EPC-B | Wood floors | Balcony | Full Height Windows | Nearby Southall Station

For more information about this property, please call our Southall branch on

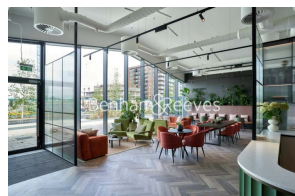
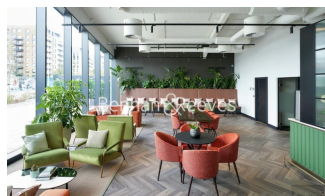
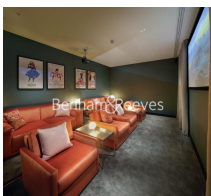
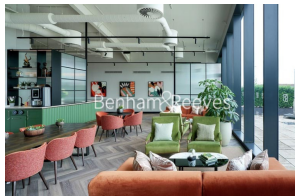
020 8051 0800

Redress & Client Money Protection :

Benham and Reeves are members of The Property Ombudsman redress scheme and have Client Money protection with ARLA Propertymark. You can find more information on our website at <https://www.benhams.com/membership/>



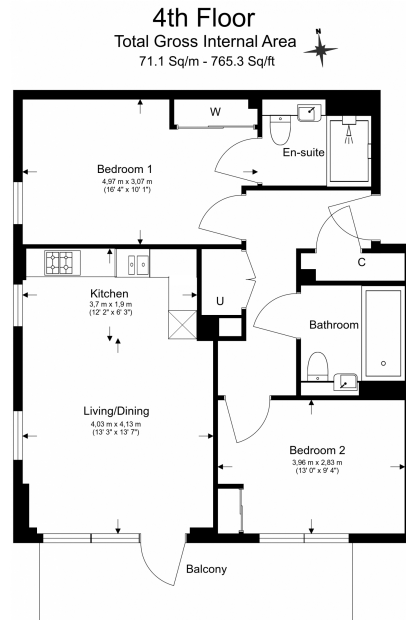
Benham & Reeves



Cedrus Avenue, Southall, UB1

£485 per week, £2,102 per month + fees

www.benhams.com



Floor Plan measurements are approximate and are for illustrative purposes only. While we do not doubt the floor plans accuracy, we make no guarantee, warranty or representation as to the accuracy and completeness of the floor plan.

Score	Energy rating	Current	Potential
92+	A		
81-91	B	84 B	84 B
69-80	C		
55-68	D		
39-54	E		
21-38	F		
1-20	G		

London branches open six days a week Mon - Sat

Canary Wharf | City | Colindale | Dartmouth Park | Ealing | Fulham
Hammersmith | Hampstead | Highgate | Hyde Park | Kensington | Kew
Knightsbridge | Nine Elms | Shoreditch | Southall | Surrey Quays
Wapping | Wembley | White City | Woolwich

International offices

China | Hong Kong SAR | India | Indonesia | Qatar | Malaysia | Middle East | Pakistan
Singapore | South Africa | Thailand | Turkey

