



Benham & Reeves

Accolade Avenue, Southall, UB1

£311 per week, £1,348 per month + fees

 1 Bedroom  1 Bathroom  Furnished

This Stunning one bedroom apartment with parking is set in the Edwin House part of the Green Quarter, an outstanding new Berkeley development on the in Western fringe of London featuring great views of the surrounding landscaped gardens.

Please [click here](#) for full detail

Property features

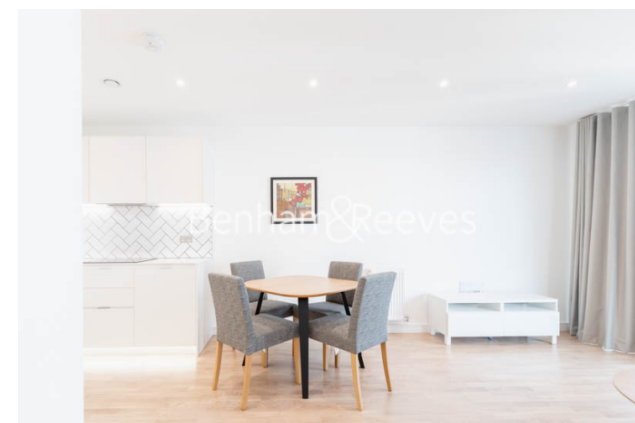
Brand new | Underground parking | Concierge | Balcony | Wood floors | EPC-B | This Stunning one bedroom apartment | Open plan design | Southall Station (Zone 4)

For more information about this property, please call our Ealing branch on

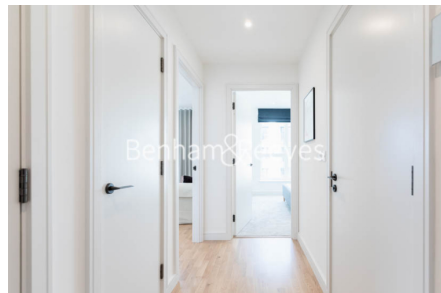
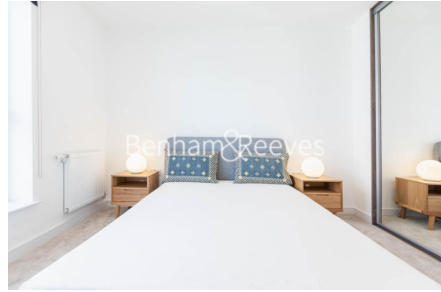
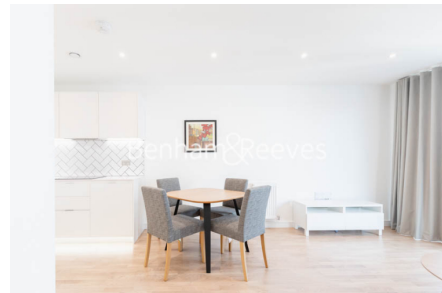
020 8280 0140

Redress & Client Money Protection :

Benham and Reeves are members of The Property Ombudsman redress scheme and have Client Money protection with ARLA Propertymark. You can find more information on our website at <https://www.benhams.com/membership/>



Benham & Reeves



Accolade Avenue, Southall, UB1

£311 per week, £1,348 per month + fees

www.benhams.com

Score	Energy rating	Current	Potential
92+	A		
81-91	B	84 B	84 B
69-80	C		
55-68	D		
39-54	E		
21-38	F		
1-20	G		

London branches open six days a week Mon - Sat

Canary Wharf | City | Colindale | Dartmouth Park | Ealing | Fulham
Hammersmith | Hampstead | Highgate | Hyde Park | Kensington | Kew
Knightsbridge | Nine Elms | Shoreditch | Southall | Surrey Quays
Wapping | Wembley | White City | Woolwich

International offices

China | Hong Kong SAR | India | Indonesia | Qatar | Malaysia | Middle East | Pakistan
Singapore | South Africa | Thailand | Turkey

