



Benham & Reeves

Onslow Square, South Kensington, SW7

£3,000 per week, £13,000 per month + fees

🛏️ 3 Bedrooms 🚿 2 Bathrooms 🛋️ Unfurnished

A rarely-available 1,484 sq ft THREE-BEDROOM luxury lateral apartment finished to an exquisite standard and situated in a beautiful period building overlooking ONSLOW SQUARE.

Please [click here](#) for full detail

Property features

Three Bedrooms | Two Bathrooms | Reception/Dining | Feature Fireplace | Separate Galley Kitchen | EPC-D | Raised Ground Floor | Unfurnished | 1,484 sq ft | South Kensington Station

For more information about this property, please call our Knightsbridge branch on

020 7581 2112

Redress & Client Money Protection :

Benham and Reeves are members of The Property Ombudsman redress scheme and have Client Money protection with ARLA Propertymark.

You can find more information on our website at <https://www.benhams.com/membership/>



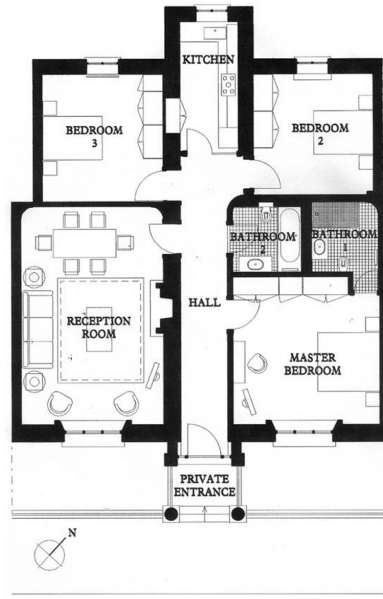
Benham & Reeves



Onslow Square, South Kensington, SW7

£3,000 per week, £13,000 per month + fees

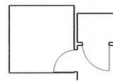
www.benhams.com



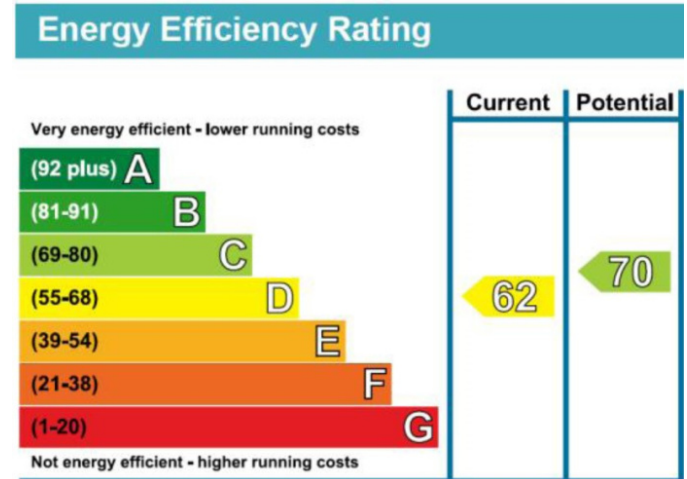
APPROX ROOM AREAS

RECEPTION ROOM 71 x 44 m - 23'6" x 15'1"
 MASTER BEDROOM 22 x 43 m - 10'9" x 14'0"
 BEDROOM 2 19 x 33 m - 17'10" x 12'10"
 BEDROOM 3 41 x 33 m - 13'6" x 12'10"
 KITCHEN 42 x 33 m - 13'9" x 10'7"

APPROX. GROSS INTERNAL AREA
 138sq.m (1,484 sq.ft)



BASEMENT
 STORE ROOMS



London branches open six days a week Mon - Sat

Canary Wharf | City | Colindale | Dartmouth Park | Ealing | Fulham
 Hammersmith | Hampstead | Highgate | Hyde Park | Kensington | Kew
 Knightsbridge | Nine Elms | Shoreditch | Southall | Surrey Quays
 Wapping | Wembley | White City | Woolwich

International offices

China | Hong Kong SAR | India | Indonesia | Qatar | Malaysia | Middle East | Pakistan
 Singapore | South Africa | Thailand | Turkey

