



Benham & Reeves

Onslow Square, South Kensington, SW7

£2,100 per week, £9,100 per month + fees

 3 Bedrooms  2 Bathrooms  Furnished

A gorgeous 1,817 sq ft THREE BEDROOM luxury apartment overlooking lush gardens with a separate home office in an elegant period building on ONSLOW SQUARE. Residents benefit from a daytime PORTER & close proximity to an eclectic mix of local amenities.

Please [click here](#) for full detail

Property features

3 Bedrooms | 2 Bathrooms | Reception | Separate Eat-In Kitchen | Home Office | EPC-E | Furnished | 1,187 sq ft | Close To Shops, Restaurants & Cafes | South Kensington Station

For more information about this property,
please call our Knightsbridge branch on

020 7581 2112

Redress & Client Money Protection :

Benham and Reeves are members of The Property Ombudsman redress scheme and have Client Money protection with ARLA Propertymark. You can find more information on our website at <https://www.benhams.com/membership/>



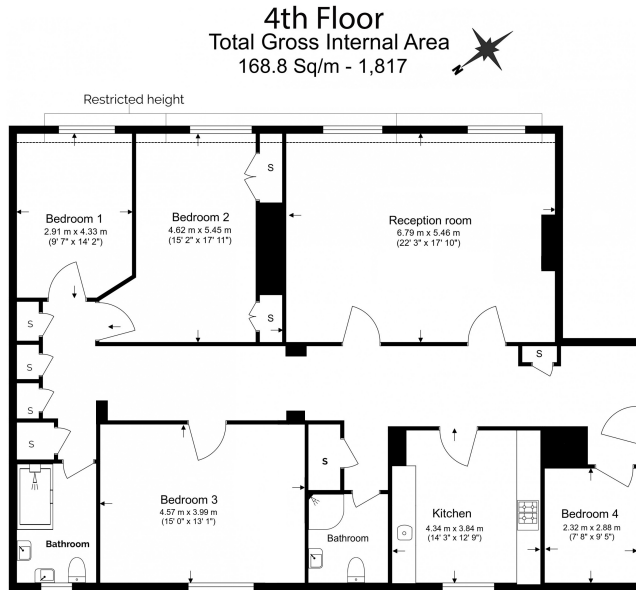
Benham & Reeves



Onslow Square, South Kensington, SW7

£2,100 per week, £9,100 per month + fees

www.benhams.com



Benham & Reeves
Floor Plan measurements are approximate and are for illustrative purposes only. While we do not doubt the floor plans accuracy, we make no guarantee, warranty or representation as to the accuracy and completeness of the floor plan.

Score	Energy rating	Current	Potential
92+	A		
81-91	B		81 B
69-80	C		
55-68	D		
39-54	E	45 E	
21-38	F		
1-20	G		

London branches open six days a week Mon - Sat

Canary Wharf | City | Colindale | Dartmouth Park | Ealing | Fulham
Hammersmith | Hampstead | Highgate | Hyde Park | Kensington | Kew
Knightsbridge | Nine Elms | Shoreditch | Southall | Surrey Quays
Wapping | Wembley | White City | Woolwich

International offices

China | Hong Kong SAR | India | Indonesia | Qatar | Malaysia | Middle East | Pakistan
Singapore | South Africa | Thailand | Turkey



Benham & Reeves