



Benham & Reeves

## **Thurloe Square, South Kensington, SW7**

£5,308 per week, £23,001 per month + fees

 7 Bedrooms    7 Bathrooms    Furnished

A spectacular 7-Bedroom Family Townhome with 2 Receptions, stunning Eat-In Kitchen, & private PATIO GARDEN - with exceptional designer features boasting elegance & style - situated in THURLOE SQUARE - notably one of London's finest garden squares in the heart of SOUTH KENSINGTON.

Please [click here](#) for full detail

## Property features

**Prestigious Knightsbridge Location | Exceptional Design | Grand Rooms | Guest Quarters | Staff Quarter | EPC-TBC | Arrange Over 5 Floors | Resident Garden | Close To London's Finest Shops And Restaurants | 3 Minutes To South Kensington Station**

For more information about this property,  
please call our Knightsbridge branch on

**020 7581 2112**

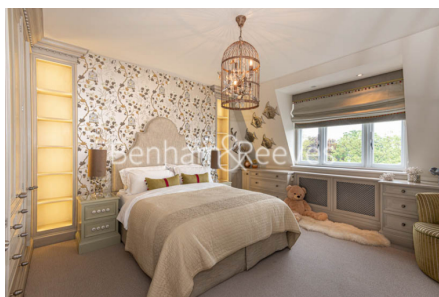
Redress & Client Money Protection :

Benham and Reeves are members of The Property Ombudsman redress scheme and have Client Money protection with ARLA Propertymark. You can find more information on our website at <https://www.benhamandreeves.com/membership/>



Benham & Reeves





# Thurloe Square, South Kensington, SW7

£5,308 per week, £23,001 per month + fees

[www.benhams.com](http://www.benhams.com)

## London branches open six days a week Mon - Sat

Canary Wharf | City | Colindale | Dartmouth Park | Ealing | Fulham  
Hammersmith | Hampstead | Highgate | Hyde Park | Kensington | Kew  
Knightsbridge | Nine Elms | Shoreditch | Southall | Surrey Quays  
Wapping | Wembley | White City | Woolwich

## International offices

China | Hong Kong SAR | India | Indonesia | Qatar | Malaysia | Middle East | Pakistan  
Singapore | South Africa | Thailand | Turkey

