



Benham & Reeves

Nell Gwynn House, Sloane Avenue, SW3

£690 per week, £2,990 per month + fees

 1 Bedroom  1 Bathroom  Furnished

SHORT SUMMER LET: A smartly-presented 320 sq ft ONE-BEDROOM flat on the 5th floor of NELL GWYNN HOUSE in CHELSEA. Furnished in sleek style, the property enjoys a quiet outlook over Draycott Avenue. Residents benefit from 24-Hr CONCIERGE & rent inclusive of Hot Water & Heating. The building is within minutes of SLOANE SQUARE & SOUTH KENSINGTON Stations.

Please [click here](#) for full detail

Property features

1 Bedroom | 1 Bathroom | 24-Hr Concierge | Hot Water & Heating Included | Furnished | EPC-C | Fitted Kitchenette | Reception | Nearby South Kensington and Sloane Square

For more information about this property, please call our Knightsbridge branch on

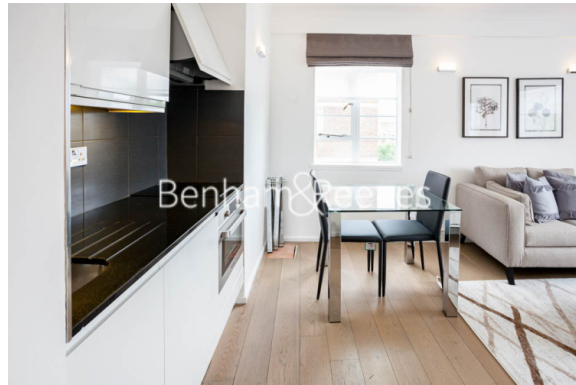
020 7581 2112

Redress & Client Money Protection :

Benham and Reeves are members of The Property Ombudsman redress scheme and have Client Money protection with ARLA Propertymark. You can find more information on our website at <https://www.benhams.com/membership/>



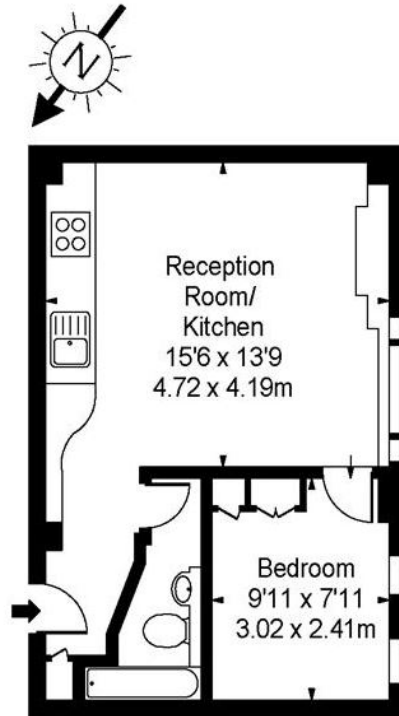
Benham & Reeves



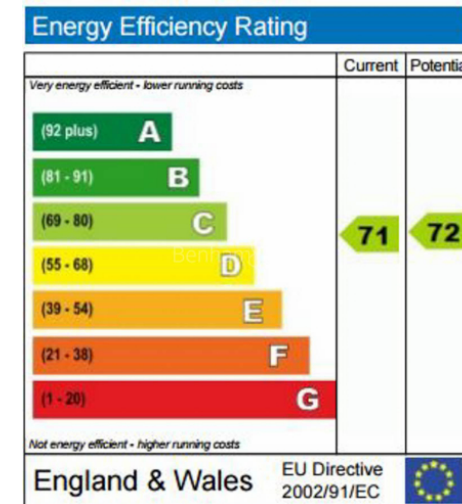
Nell Gwynn House, Sloane Avenue, SW3

£690 per week, £2,990 per month + fees

www.benhams.com



Fifth Floor



London branches open six days a week Mon - Sat

Canary Wharf | City | Colindale | Dartmouth Park | Ealing | Fulham
Hammersmith | Hampstead | Highgate | Hyde Park | Kensington | Kew
Knightsbridge | Nine Elms | Shoreditch | Southall | Surrey Quays
Wapping | Wembley | White City | Woolwich

International offices

China | Hong Kong SAR | India | Indonesia | Qatar | Malaysia | Middle East | Pakistan
Singapore | South Africa | Thailand | Turkey

