



Benham&Reeves

## **Esther Anne Place, Shoreditch, N1**

£808 per week, £3,500 per month + fees

🛏 1 Bedroom    🚿 1 Bathroom    🛋 Furnished

A stunning new-build 1-bed flat in the heart of Islington, featuring wooden floors, underfloor heating, sleek kitchen, stylish bathroom, spacious living, high-speed broadband & 24h concierge.

Please [click here](#) for full detail

## Property features

**Spacious 635sqft 1bed 1bath apartment , Wooden flooring thr | New development at the heart of Islington | Open plan fully equipped modern fitted kitchen, with dishwas | Spacious living room with overlooking communal garden | Beautifully designed modern bathroom with bath tub and rainf | EPC-C | Spacious bedroom with ample storage with floor to ceiling wa | Washer Dryer, ventilation system, High speed broadband netwo | Underfloor heating, Hot Water provided by the Heat Interface | Close to all shops, restaurants, bars in Islington High Stre**

For more information about this property,  
please call our Shoreditch branch on

**020 3868 5733**

Redress & Client Money Protection :

Benham and Reeves are members of The Property Ombudsman redress scheme and have Client Money protection with ARLA Propertymark. You can find more information on our website at <https://www.benhamandreeves.com/membership/>



**Benham & Reeves**

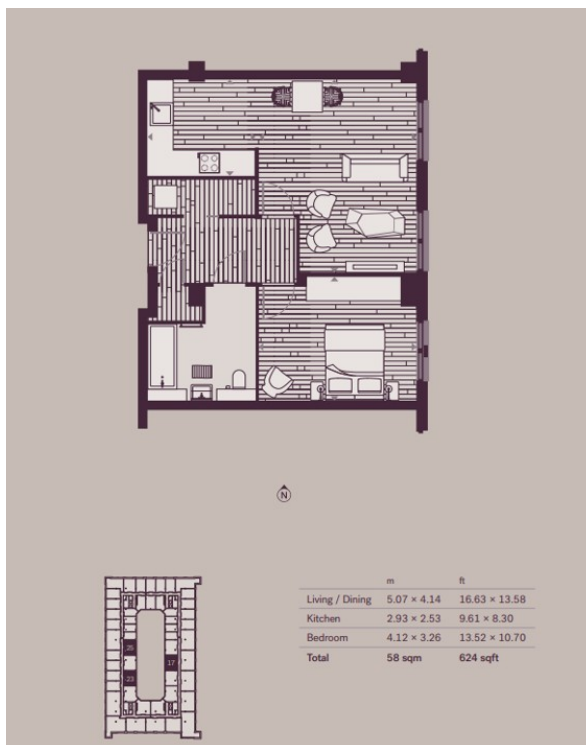




# Esther Anne Place, Shoreditch, N1

£808 per week, £3,500 per month + fees

[www.benhams.com](http://www.benhams.com)



Score	Energy rating	Current	Potential
92+	A		
81-91	B		
69-80	C	79 C	79 C
55-68	D		
39-54	E		
21-38	F		
1-20	G		

## London branches open six days a week Mon - Sat

Canary Wharf | City | Colindale | Dartmouth Park | Ealing | Fulham  
Hammersmith | Hampstead | Highgate | Hyde Park | Kensington | Kew  
Knightsbridge | Nine Elms | Shoreditch | Southall | Surrey Quays  
Wapping | Wembley | White City | Woolwich

## International offices

China | Hong Kong SAR | India | Indonesia | Qatar | Malaysia | Middle East | Pakistan  
Singapore | South Africa | Thailand | Turkey



Benham & Reeves