



Benham & Reeves

Sherrin House, Royal Warwick Square, W14

£738 per week, £3,200 per month + fees

 1 Bedroom  1 Bathroom  Furnished

A stylish 1st floor apartment situated within a superb development in one of the most desirable areas of London. Located a brief walk from Kensington Olympia Underground and Overground stations (District Line).

Please [click here](#) for full detail

Property features

Furnished | 1 Double Bedrooms & 1 Luxury Bathroom (570 Sq Ft Internally) | Open-Plan Kitchen Integrated with Well-Known Appliances | Large Reception Room with Wood Floors and Dining Area | Bespoke Furnishing / Large Private Terrace (110 Sq Ft) | EPC-C | Air Conditioning/Under Floor Heating /Air Ventilation System | 24 Hours Concierge, Swimming Pool, Spa & Fitness Studio | Nearby Kensington Olympia underground & Overground station

For more information about this property, please call our Kensington branch on

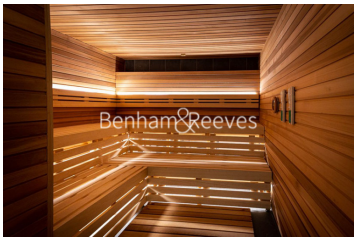
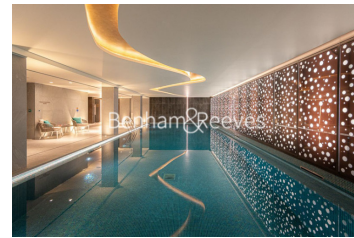
020 7938 3522

Redress & Client Money Protection :

Benham and Reeves are members of The Property Ombudsman redress scheme and have Client Money protection with ARLA Propertymark. You can find more information on our website at <https://www.benhams.com/membership/>



Benham & Reeves



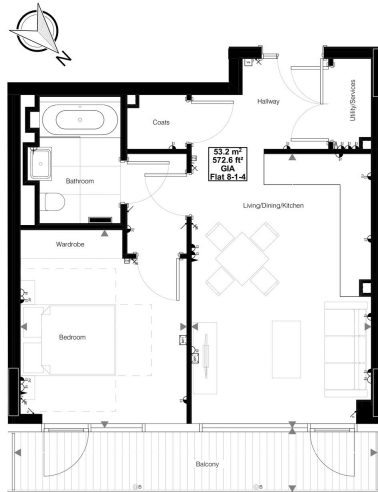
Sherrin House, Royal Warwick Square, W14

£738 per week, £3,200 per month + fees

www.benhams.com

1st Floor

Bedroom	3490 x 4158 mm	11' - 5" x 13' - 8"
Living/Dining	3770 x 5759 mm	12' - 4" x 18' - 11"
Balcony	7608 x 1345 mm	25' - 0" x 4' - 5"



Whilst every attempt has been made to ensure the accuracy of the floor plan contained here, measurements of doors, windows, rooms and any other items are approximate and no responsibility is taken for any error, omission, or mis-statement. This plan is for illustrative purposes only and should be used as such by any prospective purchaser. The services, systems and appliances shown have not been tested and no guarantee as to their operability or efficiency can be given.
Made with Metropix 02016

Score	Energy rating	Current	Potential
92+	A		
81-91	B		
69-80	C	80 C	80 C
55-68	D		
39-54	E		
21-38	F		
1-20	G		

London branches open six days a week Mon - Sat

Canary Wharf | City | Colindale | Dartmouth Park | Ealing | Fulham
Hammersmith | Hampstead | Highgate | Hyde Park | Kensington | Kew
Knightsbridge | Nine Elms | Shoreditch | Southall | Surrey Quays
Wapping | Wembley | White City | Woolwich

International offices

China | Hong Kong SAR | India | Indonesia | Qatar | Malaysia | Middle East | Pakistan
Singapore | South Africa | Thailand | Turkey

