



Benham & Reeves

Lavender Place, Royal Mint Gardens, E1

£785 per week, £3,402 per month + fees

 2 Bedrooms  2 Bathrooms  Furnished

Luxury apartment situated within a prestigious development with an array of 5* facilities in Tower Hill. Located within a short walk into The City and minutes from the DLR and London Underground.

Please [click here](#) for full detail

Property features

Furnished 2 Bedroom Apartment | Open Plan Reception / Living Area With Balcony | Bespoke Fitted Kitchen With Integrated Siemens Appliances | 2 Well Equipped Double Bedrooms | Luxury Bathroom & En-Suite With Bespoke Vanity Counter | EPC-B | Timber Floors, LED Mood Lighting, Underfloor Heating & Co | Concierge, Residents Lounge, Pool, Jacuzzi, Gym | Cinema / Screening Room, Games / Recreation Room & Residents | Tower Hill (Underground), Tower Gateway (DLR) & Fenchurch St

For more information about this property,
please call our Wapping branch on

020 7680 8900

Redress & Client Money Protection :

Benham and Reeves are members of The Property Ombudsman redress scheme and have Client Money protection with ARLA Propertymark. You can find more information on our website at <https://www.benhams.com/membership/>



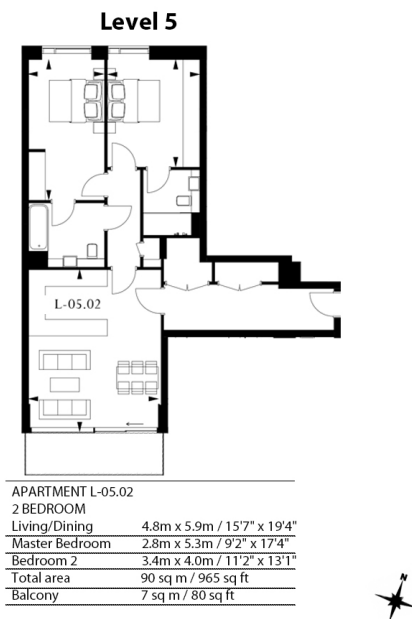
Benham & Reeves



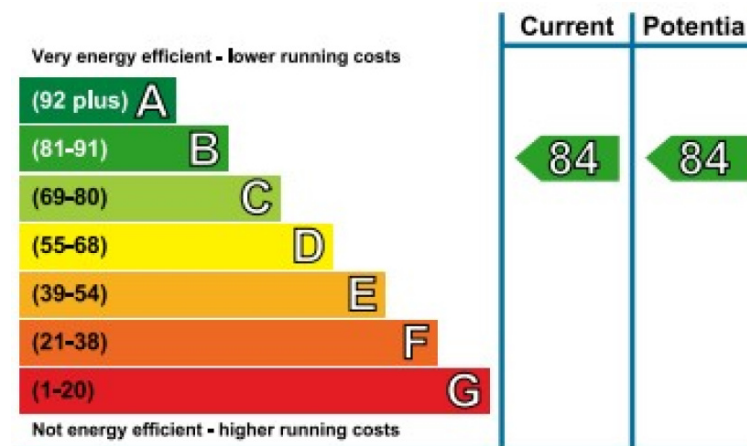
Lavender Place, Royal Mint Gardens, E1

£785 per week, £3,402 per month + fees

www.benhams.com



Floor Plan measurements are approximate and are for illustrative purposes only. While we do not doubt the floor plans accuracy, we make no guarantee, warranty or representation as to the accuracy and completeness of the floor plan.



London branches open six days a week Mon - Sat

Canary Wharf | City | Colindale | Dartmouth Park | Ealing | Fulham
Hammersmith | Hampstead | Highgate | Hyde Park | Kensington | Kew
Knightsbridge | Nine Elms | Shoreditch | Southall | Surrey Quays
Wapping | Wembley | White City | Woolwich

International offices

China | Hong Kong SAR | India | Indonesia | Qatar | Malaysia | Middle East | Pakistan
Singapore | South Africa | Thailand | Turkey



Benham & Reeves