



Benham & Reeves

Argyll Road, Royal Arsenal Riverside, SE18

£496 per week, £2,149 per month + fees

🛏️ 2 Bedrooms 🚿 2 Bathrooms 🛋️ Furnished

A spacious apartment, with blue lagoon views, situated within a desirable Riverside development in Woolwich. The property is close to excellent transport links including the on-site Thames Clipper Pier and Woolwich tube Station.

Please [click here](#) for full detail

Property features

Contemporary Furnished 2 bed 2 bath | Open plan kitchen with integrated kitchen appliances | Private balcony with views of the blue lagoon | 24 Hours Concierge | Resident Amenities, Resident Gym | EPC-C | Parking included | Close To Transport Links | Moments to Woolwich DLR station and tube station

For more information about this property,
please call our Woolwich branch on

020 8051 0700

Redress & Client Money Protection :

Benham and Reeves are members of The Property Ombudsman redress scheme and have Client Money protection with ARLA Propertymark. You can find more information on our website at <https://www.benhams.com/membership/>



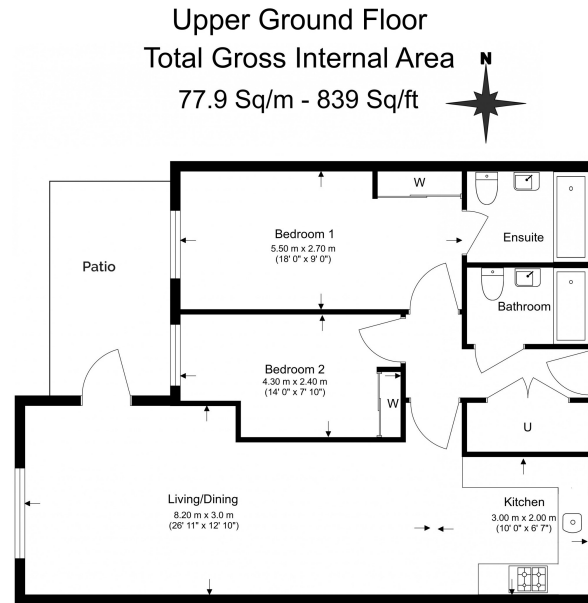
Benham&Reeves



Argyll Road, Royal Arsenal Riverside, SE18

£496 per week, £2,149 per month + fees

www.benhams.com



Floor Plan measurements are approximate and are for illustrative purposes only. While we do not doubt the floor plans accuracy, we make no guarantee, warranty or representation as to the accuracy and completeness of the floor plan.

London branches open six days a week Mon - Sat

Canary Wharf | City | Colindale | Dartmouth Park | Ealing | Fulham
Hammersmith | Hampstead | Highgate | Hyde Park | Kensington | Kew
Knightsbridge | Nine Elms | Shoreditch | Southall | Surrey Quays
Wapping | Wembley | White City | Woolwich

International offices

China | Hong Kong SAR | India | Indonesia | Israel | Malaysia | Middle East | Pakistan
Qatar | Singapore | South Africa | Thailand | Turkey



Benham & Reeves