



Benham & Reeves

**Roehampton House, Roehampton, SW15**

£1,073 per week, £4,650 per month + fees

 3 Bedrooms    4 Bathrooms    Unfurnished

Exquisite large ground floor apartment set within an iconic Grade I listed Period House. Close to Richmond Park and Barnes Station (Zone 3) offering links to Clapham Junction and London Waterloo.

Please [click here](#) for full detail

## Property features

**3 Bedrooms | 4 Bathrooms | Reception room | Unfurnished | Grade I Listed Building | EPC-C | 2241 square feet | Allocated parking included | Large communal garden | Barnes Station (Zone 3)**

For more information about this property, please call our Hammersmith branch on

**020 8600 0960**

Redress & Client Money Protection :

Benham and Reeves are members of The Property Ombudsman redress scheme and have Client Money protection with ARLA Propertymark. You can find more information on our website at <https://www.benhams.com/membership/>



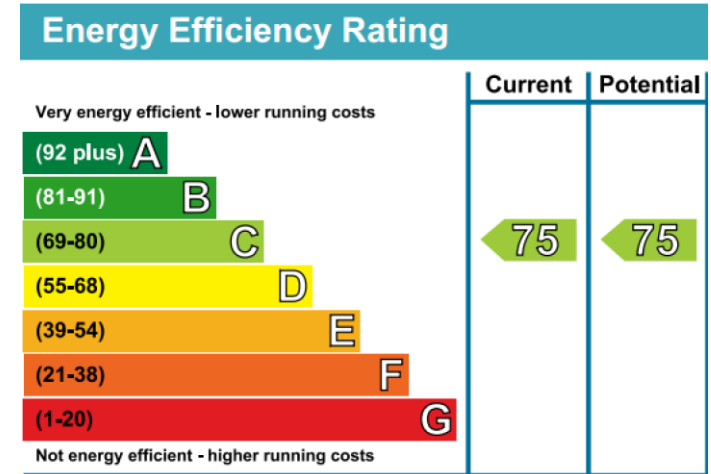
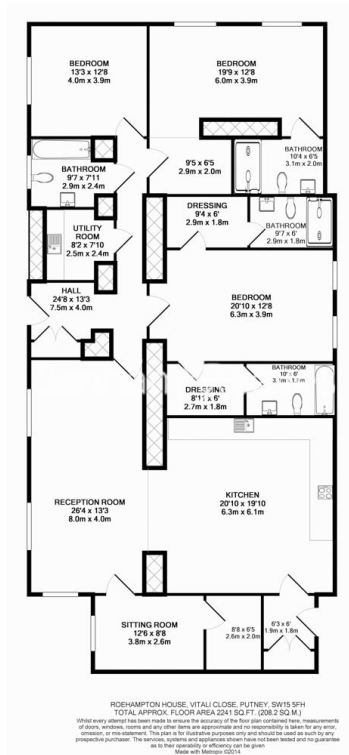
**Benham & Reeves**



# Roehampton House, Roehampton, SW15

£1,073 per week, £4,650 per month + fees

www.benhams.com



## London branches open six days a week Mon - Sat

Canary Wharf | City | Colindale | Dartmouth Park | Ealing | Fulham  
 Hammersmith | Hampstead | Highgate | Hyde Park | Kensington | Kew  
 Knightsbridge | Nine Elms | Shoreditch | Southall | Surrey Quays  
 Wapping | Wembley | White City | Woolwich



## International offices

China | Hong Kong SAR | India | Indonesia | Qatar | Malaysia | Middle East | Pakistan  
 Singapore | South Africa | Thailand | Turkey

