



Benham & Reeves

## **Portland Terrace, Richmond, TW9**

£1,039 per week, £4,502 per month + fees

 3 Bedrooms    2 Bathrooms    Unfurnished

An expansive 1st floor apartment set in a handsome period semi-detached conversion located in the heart of Richmond, nearby local amenities, and Richmond Station (District Line) Overground and National Rail.

Please [click here](#) for full detail

## Property features

**Views Over Richmond Green | White Stucco House | Wood Floors | Modern Kitchen | Bright Apartment | EPC-C | Local Amenities | Walking Distance To River Thames | Excellent Transport Links | Richmond Station**

For more information about this property,  
please call our Kew branch on

**020 8326 1960**

Redress & Client Money Protection :

Benham and Reeves are members of The Property Ombudsman redress scheme and have Client Money protection with ARLA Propertymark. You can find more information on our website at <https://www.benhamandreeves.com/membership/>



**Benham & Reeves**

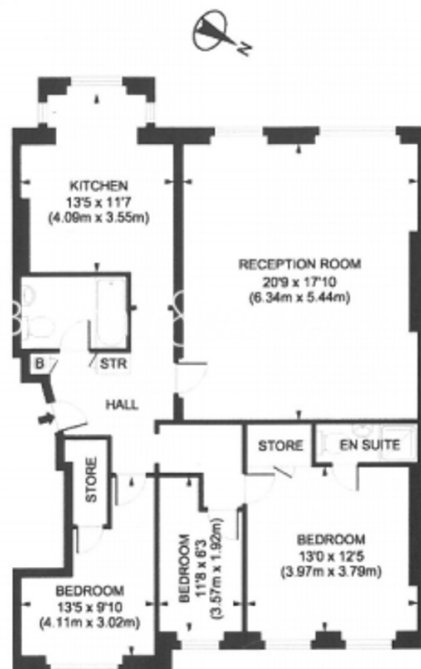




# Portland Terrace, Richmond, TW9

£1,039 per week, £4,502 per month + fees

[www.benhams.com](http://www.benhams.com)



Energy Efficiency Rating		
	Current	Potential
Very energy efficient - lower running costs		
(92 plus) <b>A</b>		
(81-91) <b>B</b>		
(69-80) <b>C</b>		
(55-68) <b>D</b>	70	74
(39-54) <b>E</b>		
(21-38) <b>F</b>		
(1-20) <b>G</b>		
Not energy efficient - higher running costs		
England & Wales		EU Directive 2002/91/EC

## London branches open six days a week Mon - Sat

Canary Wharf | City | Colindale | Dartmouth Park | Ealing | Fulham  
Hammersmith | Hampstead | Highgate | Hyde Park | Kensington | Kew  
Knightsbridge | Nine Elms | Shoreditch | Southall | Surrey Quays  
Wapping | Wembley | White City | Woolwich

## International offices

China | Hong Kong SAR | India | Indonesia | Qatar | Malaysia | Middle East | Pakistan  
Singapore | South Africa | Thailand | Turkey



Benham & Reeves