



Benham & Reeves

St Johns Wood, Regents Park, NW8

£900 per week, £3,900 per month + fees

🛏 1 Bedroom 🚿 1 Bathroom 🚗 Furnished

An impeccable 1 double bedroom apartment (584 Sq Ft Internally) set on the 3rd floor of this sought-after luxury building. The property is located just a moment away from Regent's Park and close to the unique St John's Wood High Street and underground.

Please [click here](#) for full detail

Property features

1 Double Bedroom with Plenty Built-in Wardrobes (3rd Floor) | 1 Fully Marbled Luxury Bathrooms with Brass Fixtures | Double Reception Room with Dining Area and Large Windows | Contemporary Open-Plan Fitted Kitchen with Appliances | Internal Area: 584 Sq Ft Internally / Fully Furnished | EPC-B | Good Size Hallway / Storage Room / Private Balcony (43 Sq Ft | Air Conditioning / Underfloor Heating / Air Ventilation | High Spec Gym / Swimming pool / Jacuzzi / Sauna | close to the unique St John's Wood High Street & underground

For more information about this property,
please call our Hyde Park branch on

020 7402 9866

Redress & Client Money Protection :

Benham and Reeves are members of The Property Ombudsman redress scheme and have Client Money protection with ARLA Propertymark. You can find more information on our website at <https://www.benhams.com/membership/>



Benham & Reeves

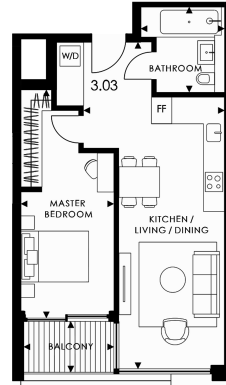


St Johns Wood, Regents Park, NW8

£900 per week, £3,900 per month + fees

www.benhams.com

3rd Floor
Approx gross internal area: 584sq/ft - 54sq/m



KITCHEN /LIVING / DINING	9.65m x 4.16m	31' 8" x 13' 8"
MASTER BEDROOM	6.74m x 2.74m	22' 1" x 9'
BATHROOM	2.52m x 2.47m	8' 3" x 8' 1"
BALCONY	2.66m x 1.5m	8' 9" x 4' 11"

Whilst every attempt has been made to ensure the accuracy of the floor plan contained here, measurements of doors, windows, rooms and any other items are approximate and no responsibility is taken for any error, omission, or mis-statement. This plan is for illustrative purposes only and should be used as such by any prospective purchaser. The services, systems and appliances shown have not been tested and no guarantee as to their operability or efficiency can be given.
Made with Metrax 62016

Score	Energy rating	Current	Potential
92+	A		
81-91	B	84 B	84 B
69-80	C		
55-68	D		
39-54	E		
21-38	F		
1-20	G		

London branches open six days a week Mon - Sat

Canary Wharf | City | Colindale | Dartmouth Park | Ealing | Fulham
Hammersmith | Hampstead | Highgate | Hyde Park | Kensington | Kew
Knightsbridge | Nine Elms | Shoreditch | Southall | Surrey Quays
Wapping | Wembley | White City | Woolwich

International offices

China | Hong Kong SAR | India | Indonesia | Qatar | Malaysia | Middle East | Pakistan
Singapore | South Africa | Thailand | Turkey

