



Benham & Reeves

Lincoln Square, Portugal Street, WC2A

£1,650 per week, £7,150 per month + fees

 2 Bedrooms  2 Bathrooms  Furnished

Beautifully furnished 4th floor apartment situated within a development surrounded by academic, legal, and cultural institutions, whilst also offering easy access to the cultural hub of Covent Garden WC2. A 6 minute walk to Holborn Station.

Please [click here](#) for full detail

Property features

2 Bedroom Apartment | Bespoke Family Bathroom and Ensuite Shower | Open Plan Living Space | Fully Fitted Kitchen | Furnished | EPC-B | 24-Hour Concierge, Excellent Amenities | including Gym, Spa, Swimming Pool, Library, Cinema | Excellent Transport Links | Temple Underground Station Nearby

For more information about this property,
please call our City branch on

020 7213 9700

Redress & Client Money Protection :

Benham and Reeves are members of The Property Ombudsman redress scheme and have Client Money protection with ARLA Propertymark. You can find more information on our website at <https://www.benhams.com/membership/>



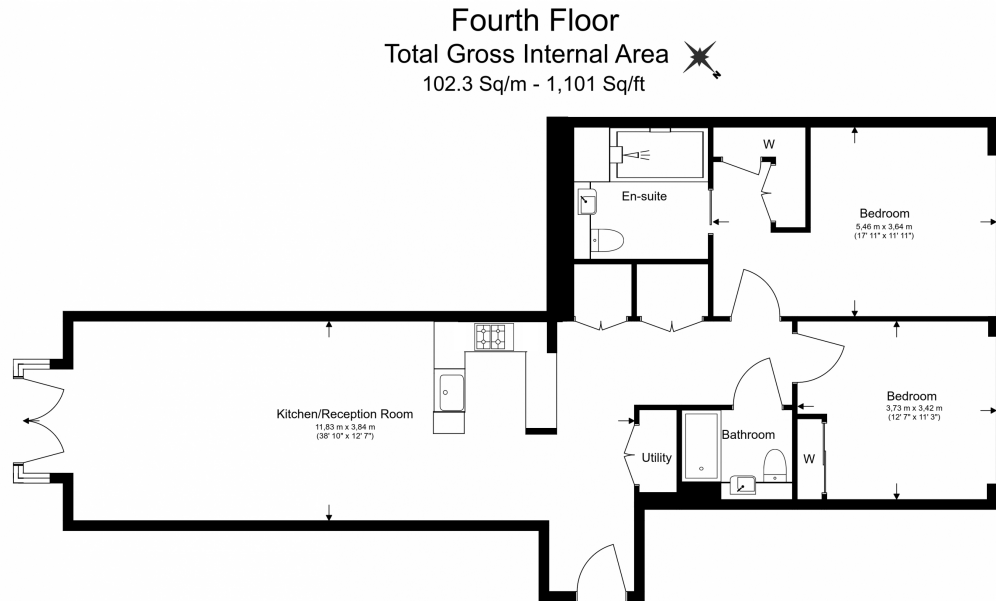
Benham & Reeves



Lincoln Square, Portugal Street, WC2A

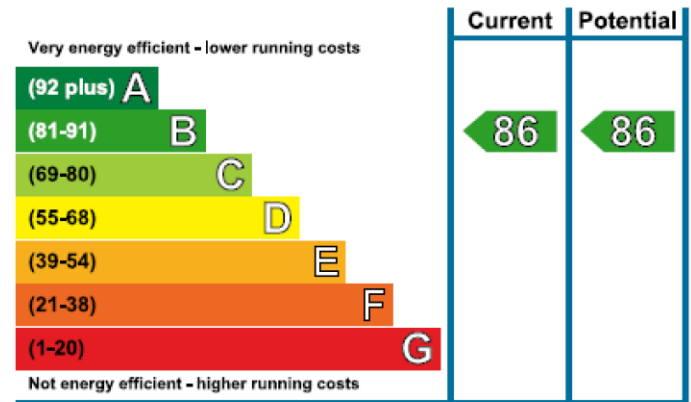
£1,650 per week, £7,150 per month + fees

www.benhams.com



Floor Plan measurements are approximate and are for illustrative purposes only. While we do not doubt the floor plans accuracy, we make no guarantee, warranty or representation as to the accuracy and completeness of the floor plan.

Energy Efficiency Rating



London branches open six days a week Mon - Sat

Canary Wharf | City | Colindale | Dartmouth Park | Ealing | Fulham
Hammersmith | Hampstead | Highgate | Hyde Park | Kensington | Kew
Knightsbridge | Nine Elms | Shoreditch | Southall | Surrey Quays
Wapping | Wembley | White City | Woolwich



International offices

China | Hong Kong SAR | India | Indonesia | Qatar | Malaysia | Middle East | Pakistan
Singapore | South Africa | Thailand | Turkey

Benham & Reeves