



Benham & Reeves

Lincoln Square, Portugal Street, WC2A

£1,154 per week, £5,000 per month + fees

🛏 1 Bedroom 🚿 1 Bathroom 🛋 Furnished

We are delighted to offer this beautiful 1 bedroom apartment, located on the 2nd floor within this luxury development - Lincoln Square

Please [click here](#) for full detail

Property features

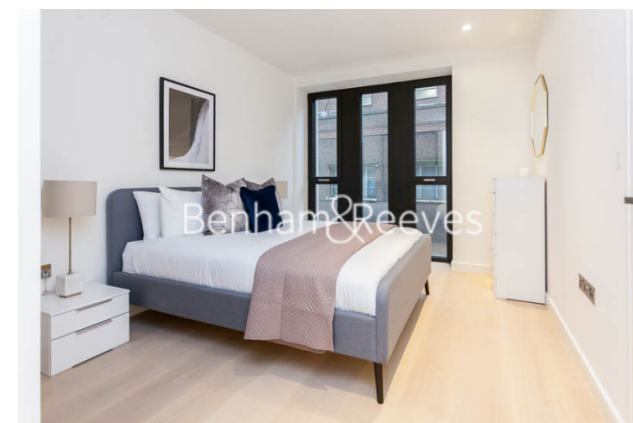
One Bedroom Apartment | Bespoke Bathroom | Open Plan Living Space | Fully Fitted Kitchen | Furnished | EPC-B | 24-Hour Concierge & Security | Private Landscaped Garden | RESIDENTS FACILITIES - 24 Hr Concierge, Cinema, Snooker Room | Close To Holborn & Chancery Lane

For more information about this property,
please call our City branch on

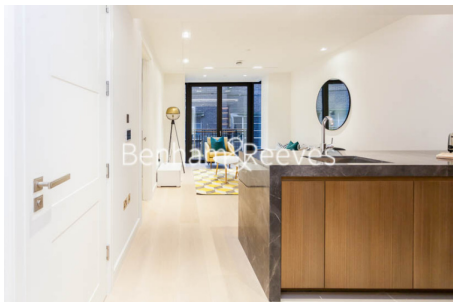
020 7213 9700

Redress & Client Money Protection :

Benham and Reeves are members of The Property Ombudsman redress scheme and have Client Money protection with ARLA Propertymark. You can find more information on our website at <https://www.benhamandreeves.com/membership/>



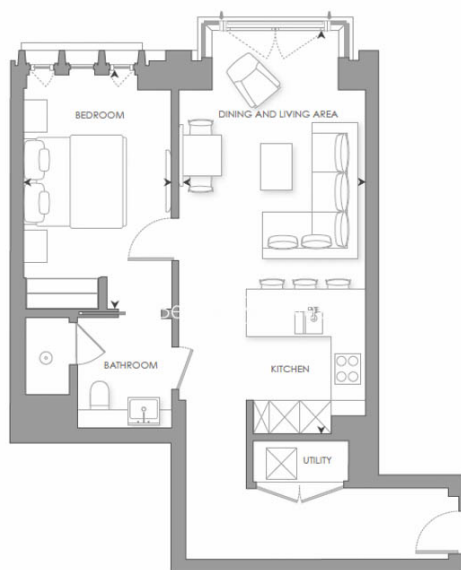
Benham & Reeves



Lincoln Square, Portugal Street, WC2A

£1,154 per week, £5,000 per month + fees

www.benhams.com



Score	Energy rating	Current	Potential
92+	A		
81-91	B	85 B	85 B
69-80	C		
55-68	D		
39-54	E		
21-38	F		
1-20	G		

London branches open six days a week Mon - Sat

Canary Wharf | City | Colindale | Dartmouth Park | Ealing | Fulham
Hammersmith | Hampstead | Highgate | Hyde Park | Kensington | Kew
Knightsbridge | Nine Elms | Shoreditch | Southall | Surrey Quays
Wapping | Wembley | White City | Woolwich

International offices

China | Hong Kong SAR | India | Indonesia | Qatar | Malaysia | Middle East | Pakistan
Singapore | South Africa | Thailand | Turkey



Benham & Reeves