



Benham & Reeves

Hawser Lane, Poplar riverside, E14

£496 per week, £2,150 per month + fees

 1 Bedroom  1 Bathroom  Part-furnished

A stunning apartment situated in an equally stunning riverside development, with exclusive resident facilities, and within easy reach of the heart of London... Nearby Canning Town Underground station (less than a mile away) provides excellent transport links.

Please [click here](#) for full detail

Property features

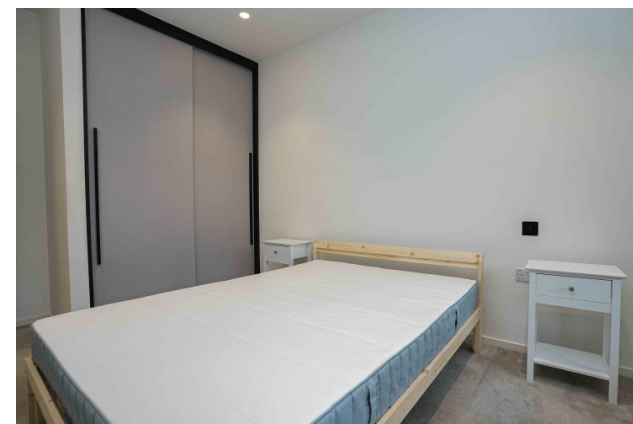
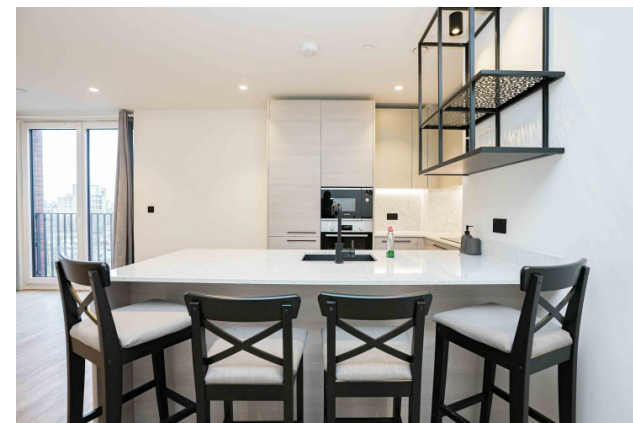
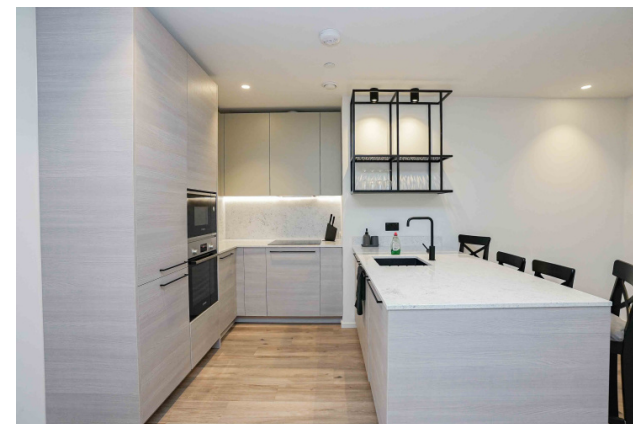
One Double Bedroom | One Bathroom | Open Planned Living | Part Furnished | Fitted Kitchen | EPC- B | Benefits from 24 hour Concierge and Residents Gym | Close distance to Canary wharf | Nearby Canning Town Underground station

For more information about this property,
please call our Canary Wharf branch on

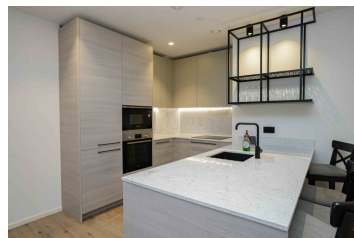
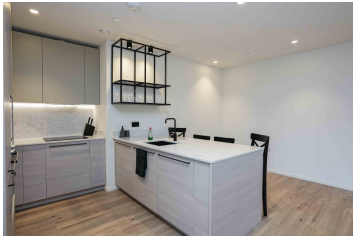
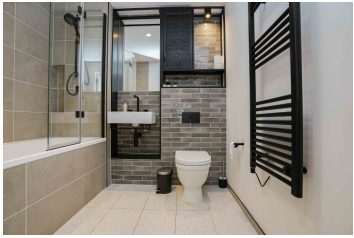
020 8036 3200

Redress & Client Money Protection :

Benham and Reeves are members of The Property Ombudsman redress scheme and have Client Money protection with ARLA Propertymark. You can find more information on our website at <https://www.benhams.com/membership/>



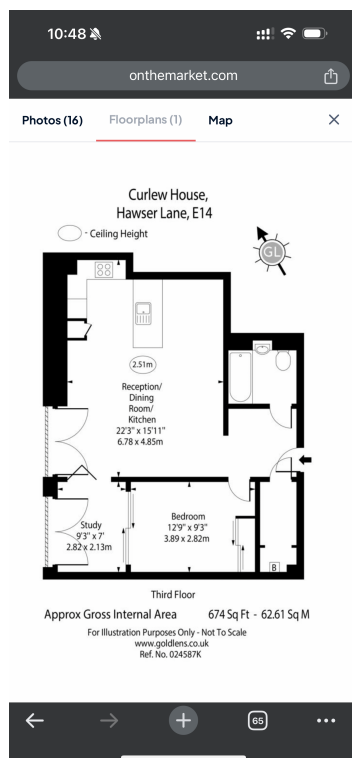
Benham & Reeves



Hawser Lane, Poplar riverside, E14

£496 per week, £2,150 per month + fees

www.benhams.com



[See how to improve this property's energy efficiency.](#)

Score	Energy rating	Current	Potential
92+	A		
81-91	B	84 B	84 B
69-80	C		
55-68	D		
39-54	E		
21-38	F		
1-20	G		

London branches open six days a week Mon - Sat

Canary Wharf | City | Colindale | Dartmouth Park | Ealing | Fulham
Hammersmith | Hampstead | Highgate | Hyde Park | Kensington | Kew
Knightsbridge | Nine Elms | Shoreditch | Southall | Surrey Quays
Wapping | Wembley | White City | Woolwich

International offices

China | Hong Kong SAR | India | Indonesia | Qatar | Malaysia | Middle East | Pakistan
Singapore | South Africa | Thailand | Turkey



Benham & Reeves