



Benham & Reeves

**Fitzroy Place, Pearson Square, Fitzrovia, W1T**

£1,750 per week, £7,583 per month + fees

 3 Bedrooms    3 Bathrooms    Unfurnished

A contemporary 3 double bedroom sub-penthouse set in Fitzrovia; central location moments from Oxford St, Tottenham Ct Rd and Soho. The property's sought-after location in the heart of central London means there are an abundance of nearby travel stations.

Please [click here](#) for full detail

## Property features

EPC-B

For more information about this property,  
please call our Hyde Park branch on

**020 7402 9866**

Redress & Client Money Protection :

Benham and Reeves are members of The Property Ombudsman redress scheme and have Client Money protection with ARLA Propertymark. You can find more information on our website at <https://www.benhams.com/membership/>



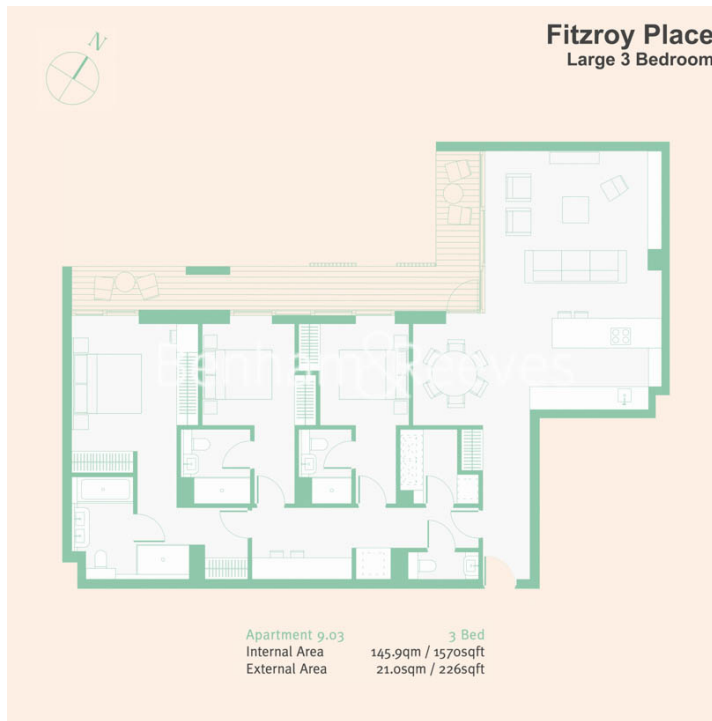
Benham & Reeves



# Fitzroy Place, Pearson Square, Fitzrovia, W1T

£1,750 per week, £7,583 per month + fees

www.benhams.com



Score	Energy rating	Current	Potential
92+	A		
81-91	B	90   B	90   B
69-80	C		
55-68	D		
39-54	E		
21-38	F		
1-20	G		

## London branches open six days a week Mon - Sat

Canary Wharf | City | Colindale | Dartmouth Park | Ealing | Fulham  
Hammersmith | Hampstead | Highgate | Hyde Park | Kensington | Kew  
Knightsbridge | Nine Elms | Shoreditch | Southall | Surrey Quays  
Wapping | Wembley | White City | Woolwich

## International offices

China | Hong Kong SAR | India | Indonesia | Qatar | Malaysia | Middle East | Pakistan  
Singapore | South Africa | Thailand | Turkey

