



Benham & Reeves

Salisbury House, Palmer Road, SW11

£950 per week, £4,117 per month + fees

 2 Bedrooms  2 Bathrooms  Furnished

A spacious 6th floor apartment situated in the latest phase of a desirable development with state of the art facilities, located in Zone 1.

Please [click here](#) for full detail

Property features

Furnished | Two double bedrooms | Two bathrooms | Balcony | Air cooling | EPC-B | 24 hour concierge | Swimming Pool | Spa facilities | Battersea Park Station

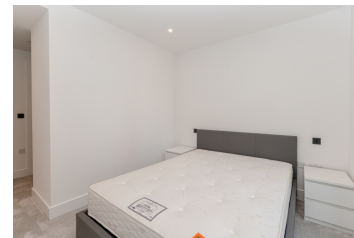
For more information about this property,
please call our Nine Elms branch on

020 3282 3700



Redress & Client Money Protection :
Benham and Reeves are members of The Property Ombudsman redress scheme and have Client Money protection with ARLA Propertymark.
You can find more information on our website at <https://www.benhams.com/membership/>

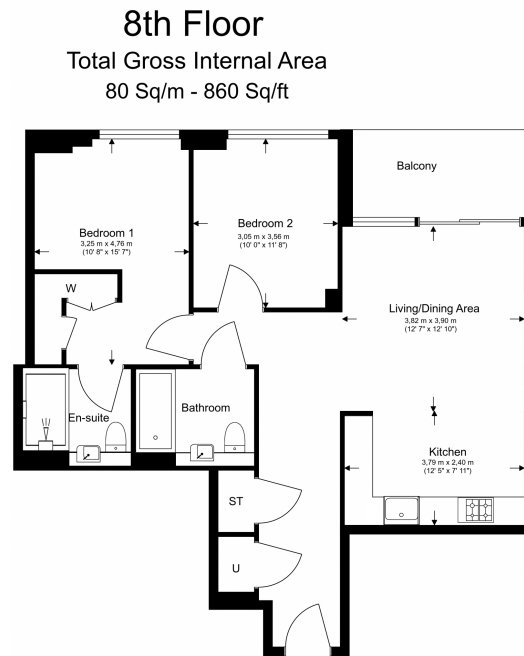
Benham & Reeves



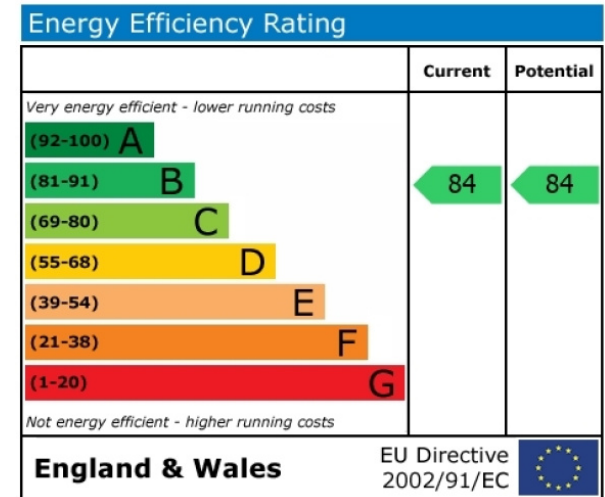
Salisbury House, Palmer Road, SW11

£950 per week, £4,117 per month + fees

www.benhams.com



Floor Plan measurements are approximate and are for illustrative purposes only. While we do not doubt the floor plans accuracy, we make no guarantee, warranty or representation as to the accuracy and completeness of the floor plan.



London branches open six days a week Mon - Sat

Canary Wharf | City | Colindale | Dartmouth Park | Ealing | Fulham
Hammersmith | Hampstead | Highgate | Hyde Park | Kensington | Kew
Knightsbridge | Nine Elms | Shoreditch | Southall | Surrey Quays
Wapping | Wembley | White City | Woolwich



International offices

China | Hong Kong SAR | India | Indonesia | Qatar | Malaysia | Middle East | Pakistan
Singapore | South Africa | Thailand | Turkey

Benham & Reeves