



Benham & Reeves

Fitzrovia, Oxford Circus, W1T

£950 per week, £4,117 per month + fees

 1 Bedroom  1 Bathroom  Furnished

A contemporary 1 bedroom apartment set in Fitzrovia; central location moments from Oxford Street, Tottenham Court Road and Soho. The property's sought-after location in the heart of central London means there is an abundance of nearby travel stations.

Please [click here](#) for full detail

Property features

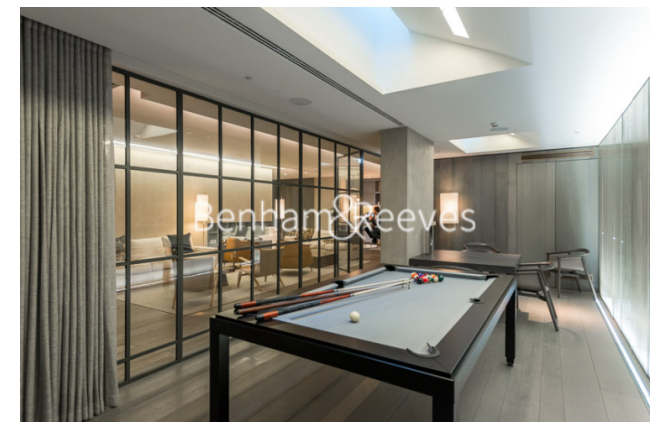
1 Double Bedroom with Large Built-in Wardrobes (6th Floor) | 1 Luxury En-Suite Double Walk-in Shower with Brass Fixture | Sizeable Reception with Dining Area / Large Windows | Open Plan Fully Fitted Kitchen Integrated with Appliances | Furnished or Unfurnished / Ceiling Speaker / Private Terrace | EPC-B | 619 Sq Ft Internally / Air Conditioning / Under Floor Heating | Residents' Gym, Pool Table room, Meeting Lounge & Cineplex | 24 Hour Concierge / 24 Hours Security & CCTV / Video Entry | Moment from the Goodge Street & Oxford Circus Tubes

For more information about this property,
please call our White City branch on

020 8187 0888

Redress & Client Money Protection :

Benham and Reeves are members of The Property Ombudsman redress scheme and have Client Money protection with ARLA Propertymark. You can find more information on our website at <https://www.benhams.com/membership/>



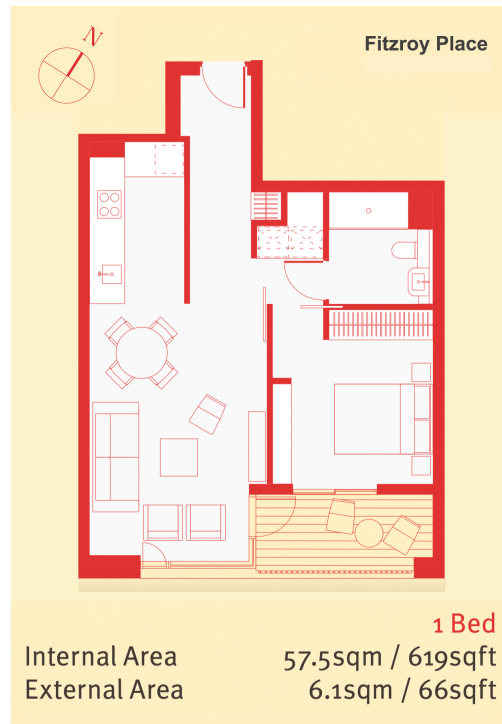
Benham & Reeves



Fitzrovia, Oxford Circus, W1T

£950 per week, £4,117 per month + fees

www.benhams.com



Score	Energy rating	Current	Potential
92+	A		
81-91	B	87 B	87 B
69-80	C		
55-68	D		
39-54	E		
21-38	F		
1-20	G		

London branches open six days a week Mon - Sat

Canary Wharf | City | Colindale | Dartmouth Park | Ealing | Fulham
Hammersmith | Hampstead | Highgate | Hyde Park | Kensington | Kew
Knightsbridge | Nine Elms | Shoreditch | Southall | Surrey Quays
Wapping | Wembley | White City | Woolwich

International offices

China | Hong Kong SAR | India | Indonesia | Qatar | Malaysia | Middle East | Pakistan
Singapore | South Africa | Thailand | Turkey

