



Benham & Reeves

**Fitzrovia, Oxford Circus W1T**

£1,384 per week, £5,997 per month + fees

 2 Bedrooms    2 Bathrooms    Furnished

A contemporary 2-bedroom duplex apartment set in Fitzrovia; central location moments from Oxford Street and Tottenham Court Road. The property's sought-after location in the heart of central London means there are an abundance of nearby travel stations.

Please [click here](#) for full detail

## Property features

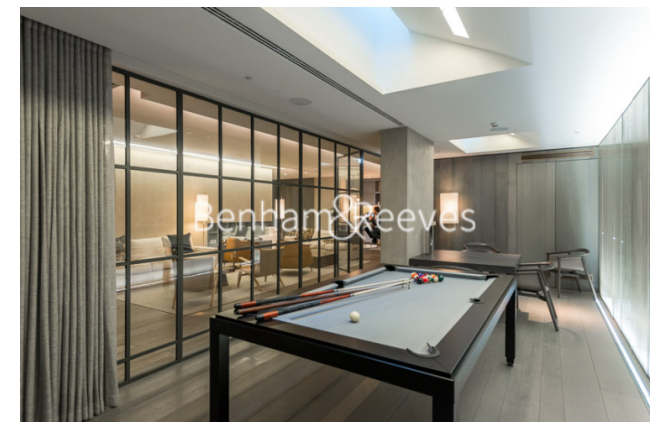
**Duplex 2 Double Bedroom with Large Built-in Wardrobes | 2.5 Bathrooms (1 x En-Suite Bathroom, 1 x En-Suite Shower) | 2 x Reception Rooms with Dining Area and Large Windows | Contemporary Semi Open-Plan Fitted Kitchen with Appliances | Bespoke Furnishing/Ceiling Speaker & iDevice Home Automation | EPC-B | 1219 Sq Ft / Air Conditioning & Under Floor Heating | Residents' Gym, Pool Table room, Meeting Lounge, Cineplex | 24 Hours Concierge, Security & CCTV / Large Private Terrace | Nearby Goodge Street underground stations**

For more information about this property, please call our Hyde Park branch on

**020 7402 9866**

Redress & Client Money Protection :

Benham and Reeves are members of The Property Ombudsman redress scheme and have Client Money protection with ARLA Propertymark. You can find more information on our website at <https://www.benhams.com/membership/>



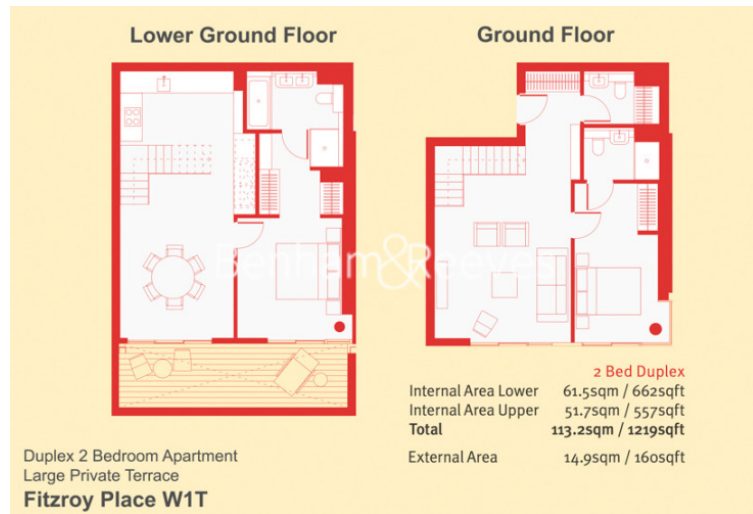
Benham & Reeves



# Fitzrovia, Oxford Circus W1T

£1,384 per week, £5,997 per month + fees

[www.benhams.com](http://www.benhams.com)



## London branches open six days a week Mon - Sat

Canary Wharf | City | Colindale | Dartmouth Park | Ealing | Fulham  
Hammersmith | Hampstead | Highgate | Hyde Park | Kensington | Kew  
Knightsbridge | Nine Elms | Shoreditch | Southall | Surrey Quays  
Wapping | Wembley | White City | Woolwich

## International offices

China | Hong Kong SAR | India | Indonesia | Qatar | Malaysia | Middle East | Pakistan  
Singapore | South Africa | Thailand | Turkey

