



Benham & Reeves

**Phoenix Court, Oval, SE11**

£865 per week, £3,748 per month + fees

 2 Bedrooms    2 Bathrooms    Furnished

Spacious apartment offered furnished situated within a sought after development located between Oval and Vauxhall with Northern Line transport options.

Please [click here](#) for full detail

## Property features

**Two Double Bedroom | Two Bathrooms | Dishwasher | Furnished | Balcony | EPC-B | 24 hour Concierge | Residence Gym | Supermarket on Site | Oval and Vauxhall Stations**

For more information about this property, please call our Nine Elms branch on

**020 3282 3700**

Redress & Client Money Protection :

Benham and Reeves are members of The Property Ombudsman redress scheme and have Client Money protection with ARLA Propertymark. You can find more information on our website at <https://www.benhams.com/membership/>



**Benham & Reeves**

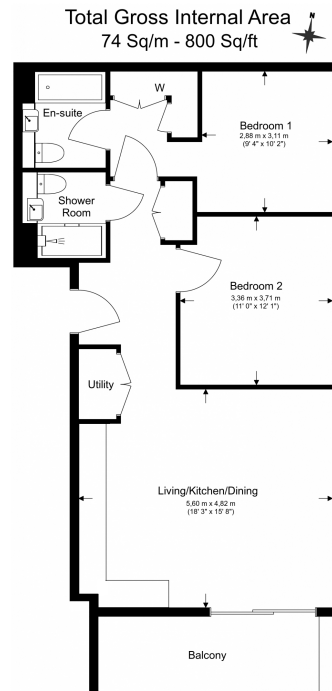




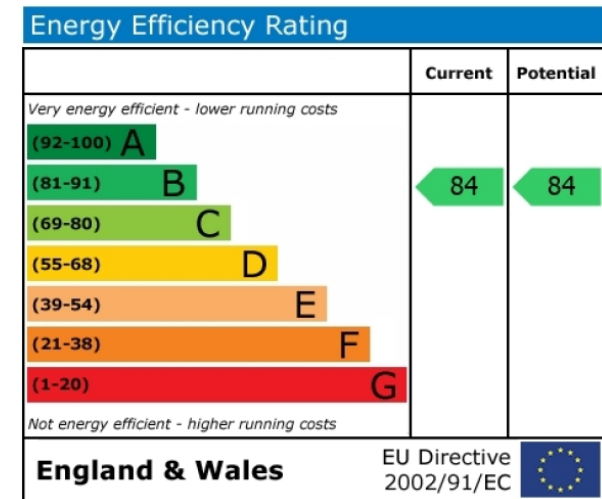
# Phoenix Court, Oval, SE11

£865 per week, £3,748 per month + fees

www.benhams.com



Floor Plan measurements are approximate and are for illustrative purposes only. While we do not doubt the floor plans accuracy, we make no guarantee, warranty or representation as to the accuracy and completeness of the floor plan.



## London branches open six days a week Mon - Sat

Canary Wharf | City | Colindale | Dartmouth Park | Ealing | Fulham  
Hammersmith | Hampstead | Highgate | Hyde Park | Kensington | Kew  
Knightsbridge | Nine Elms | Shoreditch | Southall | Surrey Quays  
Wapping | Wembley | White City | Woolwich

## International offices

China | Hong Kong SAR | India | Indonesia | Qatar | Malaysia | Middle East | Pakistan  
Singapore | South Africa | Thailand | Turkey



Benham & Reeves