



Benham & Reeves

## Hilton's Wharf, Norman Road, SE10

£554 per week, £2,401 per month + fees

 2 Bedrooms    2 Bathrooms    Furnished

Stylish 4th floor apartment situated within a desirable development located a 5 minute walk from Greenwich Park, and both Cutty Sark and Greenwich DLP

Please [click here](#) for full detail

## Property features

**Two Bedrooms | Two Bathrooms | Local bars, cafes and restaurants are minutes away | Views of the Creek | Open Plan Kitchen / Reception | EPC-B | Underfloor Heating | Bright and spacious | Private Balcony | Walking distance to Cutty Sark, Greenwich DLR & Main Railway**

For more information about this property,  
please call our Surrey Quays branch on

**020 7740 3050**

Redress & Client Money Protection :

Benham and Reeves are members of The Property Ombudsman redress scheme and have Client Money protection with ARLA Propertymark. You can find more information on our website at <https://www.benhams.com/membership/>



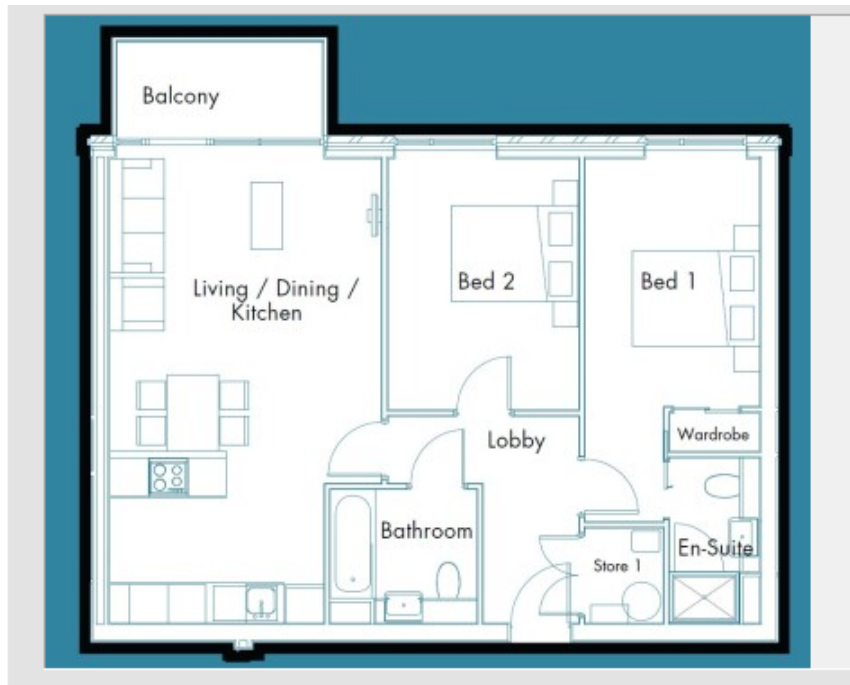
**Benham & Reeves**



# Hilton's Wharf, Norman Road, SE10

£554 per week, £2,401 per month + fees

www.benhams.com



Score	Energy rating	Current	Potential
92+	A		
81-91	B	88 B	88 B
69-80	C		
55-68	D		
39-54	E		
21-38	F		
1-20	G		

## London branches open six days a week Mon - Sat

Canary Wharf | City | Colindale | Dartmouth Park | Ealing | Fulham  
 Hammersmith | Hampstead | Highgate | Hyde Park | Kensington | Kew  
 Knightsbridge | Nine Elms | Shoreditch | Southall | Surrey Quays  
 Wapping | Wembley | White City | Woolwich

## International offices

China | Hong Kong SAR | India | Indonesia | Qatar | Malaysia | Middle East | Pakistan  
 Singapore | South Africa | Thailand | Turkey

