



Benham & Reeves

Stewarts Road, Nine Elms, SW8

£430 per week, £1,863 per month + fees

 1 Bedroom  1 Bathroom  Furnished

Modern apartment in the well-positioned Stewarts Lodge on Wandsworth Road. Superb finishes and fittings adorn this spacious property which is convenient for City professionals, students and commuters to Vauxhall, Victoria, Battersea, and Clapham.

Please [click here](#) for full detail

Property features

One Double Bedroom | Balcony | Furnished | Dishwasher | Open planned | EPC-B | Private Balcony | Nine Elms Tube Station | Nearby Stockwell Tube Station

For more information about this property, please call our Nine Elms branch on

020 3282 3700

Redress & Client Money Protection :

Benham and Reeves are members of The Property Ombudsman redress scheme and have Client Money protection with ARLA Propertymark. You can find more information on our website at <https://www.benhams.com/membership/>



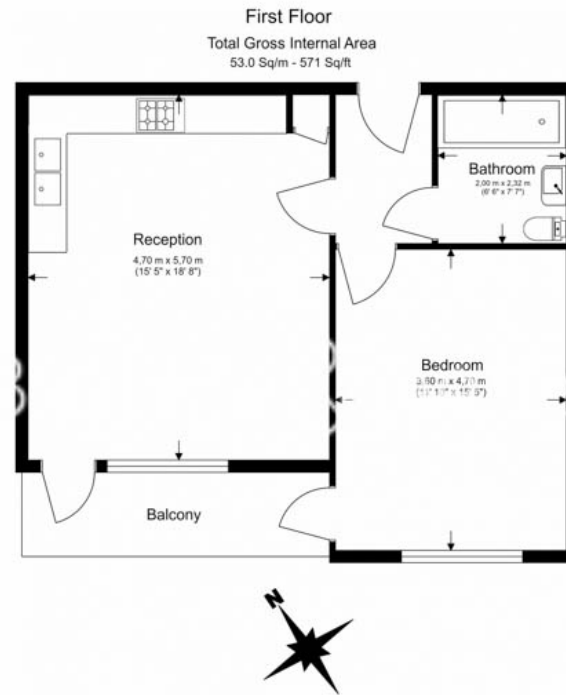
Benham & Reeves




Stewarts Road, Nine Elms, SW8

£430 per week, £1,863 per month + fees

www.benhams.com



Floor Plan measurements are approximate and are for illustrative purposes only. While we do not doubt the floor plans accuracy, we make no guarantee, warranty or representation as to the accuracy and completeness of the floor plan.

Energy Efficiency Rating		
	Current	Potential
Very energy efficient - lower running costs		
(92-100) A		
(81-91) B	87	87
(69-80) C		
(55-68) D		
(39-54) E		
(21-38) F		
(1-20) G		
Not energy efficient - higher running costs		
England & Wales	EU Directive 2002/91/EC 	

London branches open six days a week Mon - Sat

Canary Wharf | City | Colindale | Dartmouth Park | Ealing | Fulham
Hammersmith | Hampstead | Highgate | Hyde Park | Kensington | Kew
Knightsbridge | Nine Elms | Shoreditch | Southall | Surrey Quays
Wapping | Wembley | White City | Woolwich



International offices

China | Hong Kong SAR | India | Indonesia | Qatar | Malaysia | Middle East | Pakistan
Singapore | South Africa | Thailand | Turkey

Benham & Reeves