



Benham & Reeves

Bondway, Nine Elms, SW8

£1,050 per week, £4,550 per month + fees

🛏️ 2 Bedrooms 🚿 2 Bathrooms 🛋️ Furnished

Outstanding 25th floor apartment set in a fashionable development located next to Vauxhall Station, with stunning views over Central London.

Please [click here](#) for full detail

Property features

BRAND NEW | Two double bedrooms | Two bathrooms | 25 TH floor | Air cooling | EPC-B | 24 hour concierge | Swimming Pool | Gym | Vauxhall station

For more information about this property, please call our Nine Elms branch on

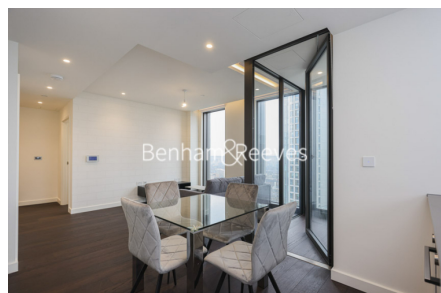
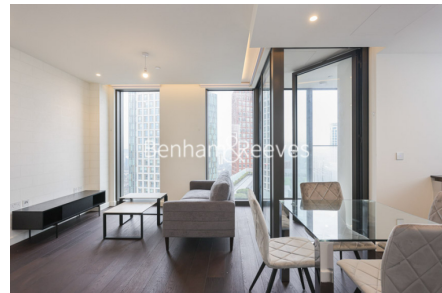
020 3282 3700

Redress & Client Money Protection :

Benham and Reeves are members of The Property Ombudsman redress scheme and have Client Money protection with ARLA Propertymark. You can find more information on our website at <https://www.benhams.com/membership/>



Benham & Reeves



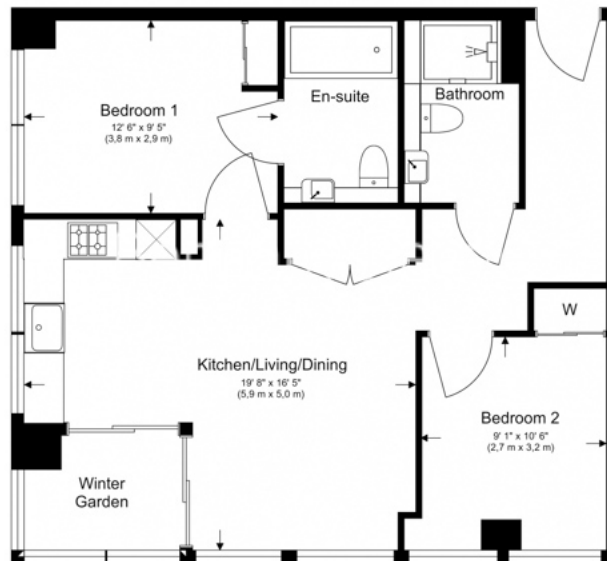
Bondway, Nine Elms, SW8

£1,050 per week, £4,550 per month + fees

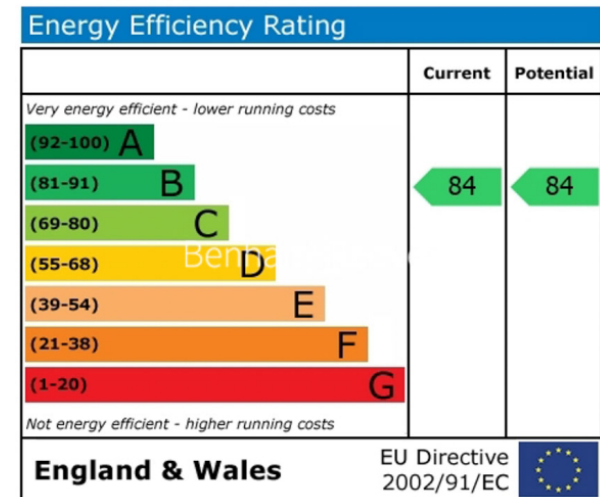
www.benhams.com

25th Floor

Total Gross Internal Area
68.0 Sq/m - 733 Sq/ft



Floor Plan measurements are approximate and are for illustrative purposes only. While we do not doubt the floor plans accuracy, we make no guarantee, warranty or representation as to the accuracy and completeness of the floor plan.



London branches open six days a week Mon - Sat

Canary Wharf | City | Colindale | Dartmouth Park | Ealing | Fulham
Hammersmith | Hampstead | Highgate | Hyde Park | Kensington | Kew
Knightsbridge | Nine Elms | Shoreditch | Southall | Surrey Quays
Wapping | Wembley | White City | Woolwich

International offices

China | Hong Kong SAR | India | Indonesia | Qatar | Malaysia | Middle East | Pakistan
Singapore | South Africa | Thailand | Turkey

