



Benham & Reeves

St. Josephs Street, Nine Elms, SW8

£681 per week, £2,951 per month + fees

 1 Bedroom  1 Bathroom  Furnished

A modern apartment situated within a sought-after development located Battersea Park and Battersea Power station.

Please [click here](#) for full detail

Property features

One double bedroom | Winter garden | Open planned living | Dishwasher | Washer/Dryer | EPC-B | 24-hour concierge | Gym | Next to Battersea Park | Battersea Power station

For more information about this property, please call our Nine Elms branch on

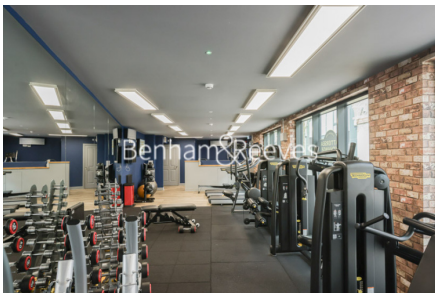
020 3282 3700

Redress & Client Money Protection :

Benham and Reeves are members of The Property Ombudsman redress scheme and have Client Money protection with ARLA Propertymark. You can find more information on our website at <https://www.benhams.com/membership/>



Benham & Reeves

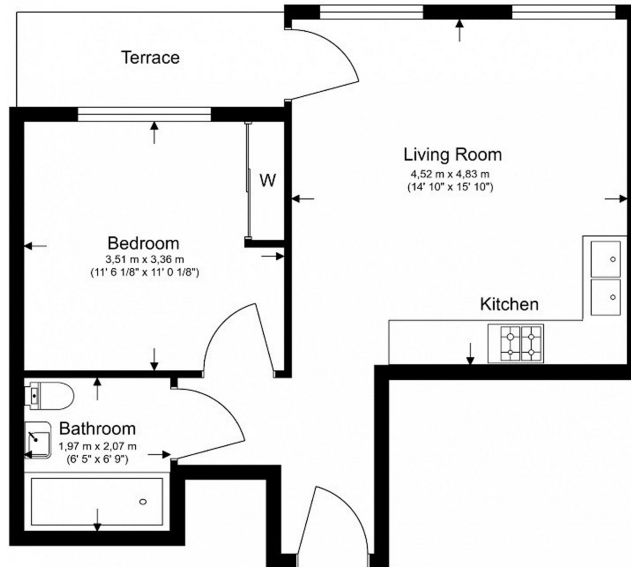


St. Josephs Street, Nine Elms, SW8

£681 per week, £2,951 per month + fees

www.benhams.com

12th Floor
 Total Gross Internal Area
 42.5 Sq/m - 458 Sq/ft



Floor Plan measurements are approximate and are for illustrative purposes only. While we do not doubt the floor plans accuracy, we make no guarantee, warranty or representation as to the accuracy and completeness of the floor plan.

Energy Efficiency Rating		
	Current	Potential
<i>Very energy efficient - lower running costs</i>		
(92-100) A		
(81-91) B	84	84
(69-80) C		
(55-68) D		
(39-54) E		
(21-38) F		
(1-20) G		
<i>Not energy efficient - higher running costs</i>		
England & Wales	EU Directive 2002/91/EC	

London branches open six days a week Mon - Sat

Canary Wharf | City | Colindale | Dartmouth Park | Ealing | Fulham
 Hammersmith | Hampstead | Highgate | Hyde Park | Kensington | Kew
 Knightsbridge | Nine Elms | Shoreditch | Southall | Surrey Quays
 Wapping | Wembley | White City | Woolwich



International offices

China | Hong Kong SAR | India | Indonesia | Qatar | Malaysia | Middle East | Pakistan
 Singapore | South Africa | Thailand | Turkey

Benham & Reeves