



Benham & Reeves

St George's Wharf, Nine Elms, SW8

£726 per week, £3,146 per month + fees

 2 Bedrooms  2 Bathrooms  Furnished

A modern, bright apartment situated in a popular Riverside development that features a series of landscaped courtyards overlooking the River Thames and a selection of on-site amenities. Conveniently located a short walk from Vauxhall Underground Station (Victoria Line).

Please [click here](#) for full detail

Property features

Two double bedrooms | Two bathrooms | Balcony | Semi open planned living | Supermarket on site | EPC-C | 24-hour concierge | Riverside development | Dishwasher | Nearby Vauxhall Underground station

For more information about this property,
please call our Nine Elms branch on

020 3282 3700

Redress & Client Money Protection :

Benham and Reeves are members of The Property Ombudsman redress scheme and have Client Money protection with ARLA Propertymark. You can find more information on our website at <https://www.benhams.com/membership/>



Benham & Reeves



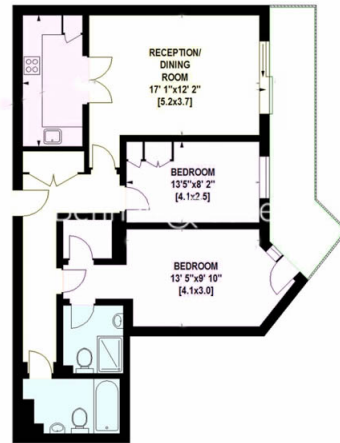
St George's Wharf, Nine Elms, SW8

£726 per week, £3,146 per month + fees

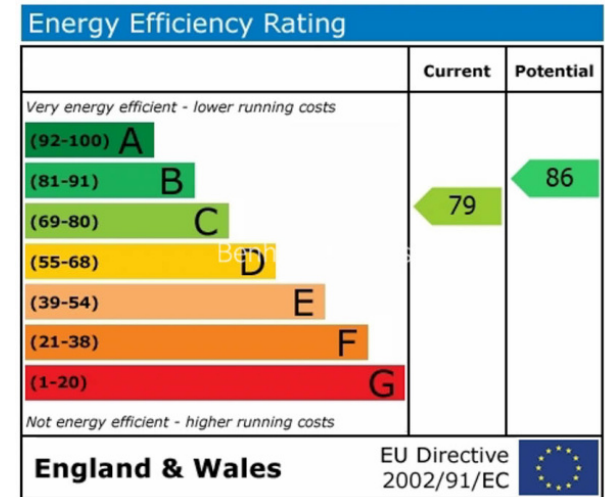
www.benhams.com

DH.SGW.SW8 - 3rd Floor

Gross internal Area: 82 sM - 870 sFt



Whilst every attempt has been made to ensure the accuracy of the floor plan contained here, measurements of doors, windows, rooms and any other items are approximate and no responsibility is taken for any error, omission, or mis-statement. This plan is for illustrative purposes only and should be used as such by any prospective purchaser. The services, systems and appliances shown have not been tested and no guarantee as to their operability or efficiency can be given.
Made with Metropix ©2016



London branches open six days a week Mon - Sat

Canary Wharf | City | Colindale | Dartmouth Park | Ealing | Fulham
Hammersmith | Hampstead | Highgate | Hyde Park | Kensington | Kew
Knightsbridge | Nine Elms | Shoreditch | Southall | Surrey Quays
Wapping | Wembley | White City | Woolwich

International offices

China | Hong Kong SAR | India | Indonesia | Qatar | Malaysia | Middle East | Pakistan
Singapore | South Africa | Thailand | Turkey

