



Benham & Reeves

Bondway, Nine Elms, SW8

£1,600 per week, £6,933 per month + fees

 3 Bedrooms  3 Bathrooms  Furnished

A fashionable, large 22nd floor apartment, with direct views of Central London, situated in a sought-after Tower development located next to Vauxhall Station (Victoria Line).

Please [click here](#) for full detail

Property features

22nd floor | Three double bedrooms | Three bathrooms | Open planned living | Air cooling | EPC-B | 24 hour concierge | Swimming Pool | Gym | Nearby Vauxhall Station

For more information about this property, please call our Nine Elms branch on

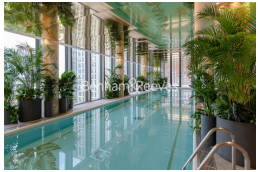
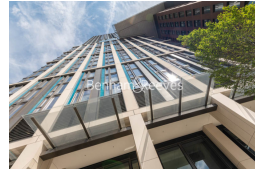
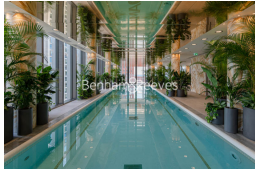
020 3282 3700

Redress & Client Money Protection :

Benham and Reeves are members of The Property Ombudsman redress scheme and have Client Money protection with ARLA Propertymark. You can find more information on our website at <https://www.benhams.com/membership/>



Benham & Reeves

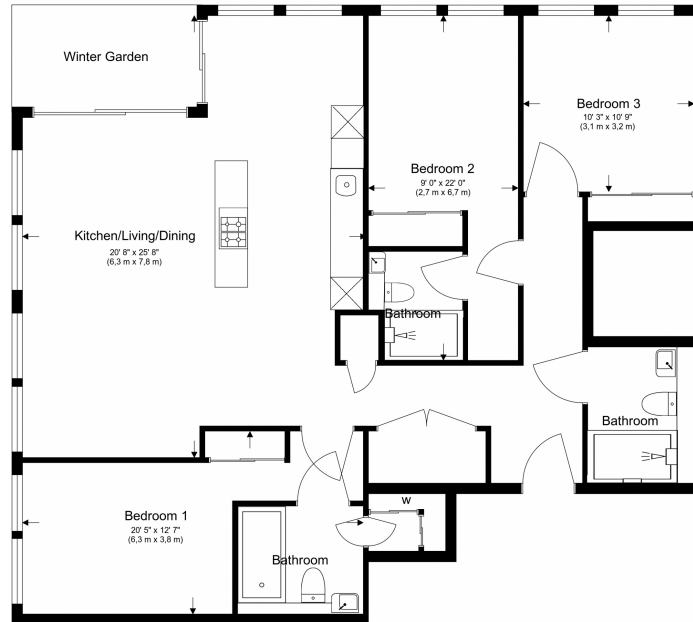


Bondway, Nine Elms, SW8

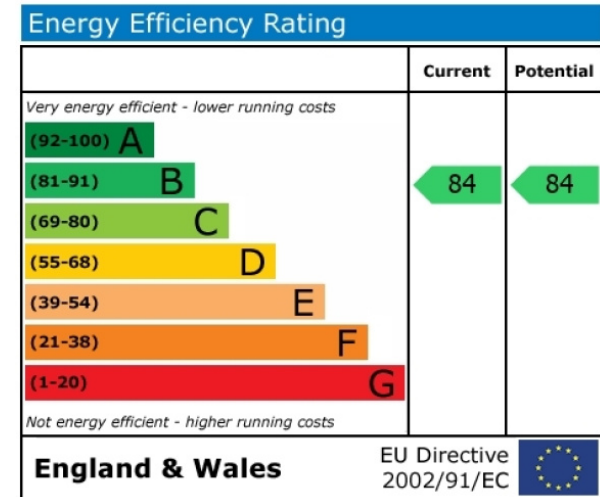
£1,600 per week, £6,933 per month + fees

www.benhams.com

Total Gross Internal Area
124.9 Sq/m - 1344.7 Sq/ft



Floor Plan measurements are approximate and are for illustrative purposes only. While we do not doubt the floor plans accuracy, we make no guarantee, warranty or representation as to the accuracy and completeness of the floor plan.



London branches open six days a week Mon - Sat

Canary Wharf | City | Colindale | Dartmouth Park | Ealing | Fulham
Hammersmith | Hampstead | Highgate | Hyde Park | Kensington | Kew
Knightsbridge | Nine Elms | Shoreditch | Southall | Surrey Quays
Wapping | Wembley | White City | Woolwich

International offices

China | Hong Kong SAR | India | Indonesia | Qatar | Malaysia | Middle East | Pakistan
Singapore | South Africa | Thailand | Turkey



Benham & Reeves