



Benham & Reeves

Bondway, Nine Elms, SW8

£800 per week, £3,467 per month + fees

🛏 1 Bedroom 🚿 1 Bathroom 🛋 Furnished

A desirable 27th floor apartment situated in a sought-after development, with 5* resident facilities, located next to Vauxhall Station.

Please [click here](#) for full detail

Property features

One Double bedroom | 27th Floor | Air cooling | Dishwasher | Winter Garden | EPC-B | 24 hour concierge | Swimming pool | Gym | Vauxhall and Nine Elms Stations

For more information about this property, please call our Nine Elms branch on

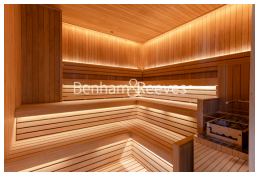
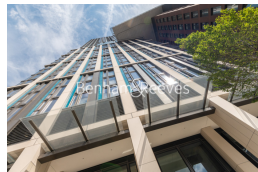
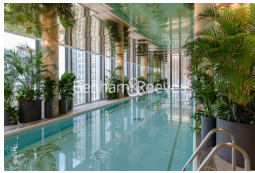
020 3282 3700

Redress & Client Money Protection :

Benham and Reeves are members of The Property Ombudsman redress scheme and have Client Money protection with ARLA Propertymark. You can find more information on our website at <https://www.benhams.com/membership/>



Benham & Reeves



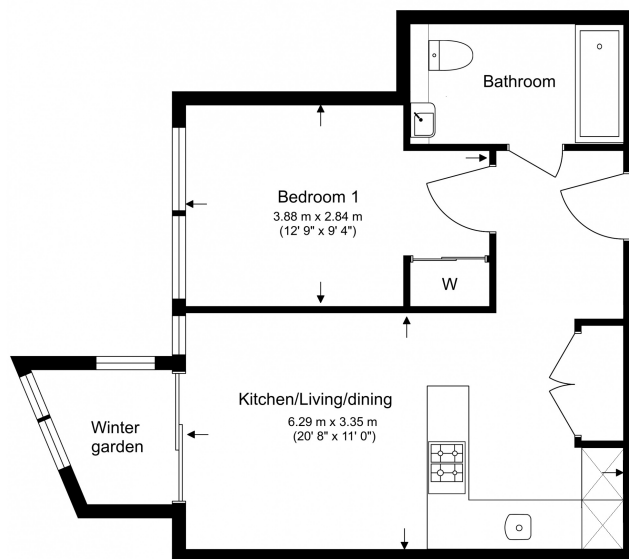
Bondway, Nine Elms, SW8

£800 per week, £3,467 per month + fees

www.benhams.com

Total Gross Internal Area

163.6 Sq/m - 537.7 Sq/ft



Floor Plan measurements are approximate and are for illustrative purposes only. While we do not doubt the floor plans accuracy, we make no guarantee, warranty or representation as to the accuracy and completeness of the floor plan.

Energy Efficiency Rating		
	Current	Potential
<i>Very energy efficient - lower running costs</i>		
(92-100) A		
(81-91) B	82	82
(69-80) C		
(55-68) D		
(39-54) E		
(21-38) F		
(1-20) G		
<i>Not energy efficient - higher running costs</i>		
England & Wales	EU Directive 2002/91/EC	

London branches open six days a week Mon - Sat

Canary Wharf | City | Colindale | Dartmouth Park | Ealing | Fulham
Hammersmith | Hampstead | Highgate | Hyde Park | Kensington | Kew
Knightsbridge | Nine Elms | Shoreditch | Southall | Surrey Quays
Wapping | Wembley | White City | Woolwich



International offices

China | Hong Kong SAR | India | Indonesia | Qatar | Malaysia | Middle East | Pakistan
Singapore | South Africa | Thailand | Turkey

Benham & Reeves