



Benham & Reeves

New Union Square, Nine Elms, SW11

£1,038 per week, £4,498 per month + fees

 2 Bedrooms  2 Bathrooms  Furnished

Large apartment situated in a sought-after development in Nine Elms with five-star facilities and direct River views. Ideally located a short walk from Vauxhall and Nine Elms Stations.

Please [click here](#) for full detail

Property features

Two double bedrooms | Two bathrooms | Open planned living room | Two winter gardens | River views | EPC-B | 24 hour concierge | Swimming Pool | Gym | Nine Elms and Vauxhall Stations

For more information about this property, please call our Nine Elms branch on

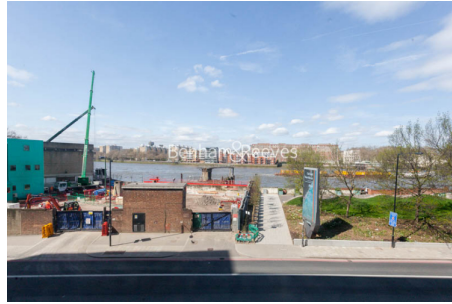
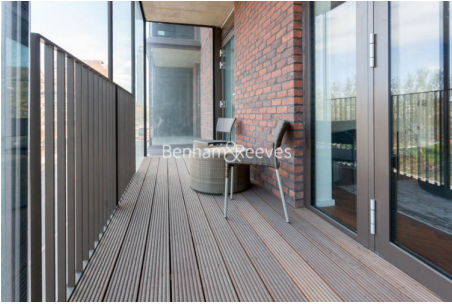
020 3282 3700

Redress & Client Money Protection :

Benham and Reeves are members of The Property Ombudsman redress scheme and have Client Money protection with ARLA Propertymark. You can find more information on our website at <https://www.benhams.com/membership/>



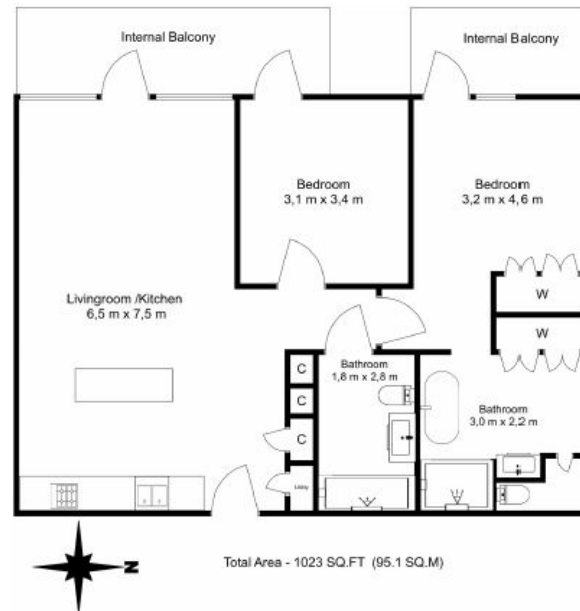
Benham & Reeves



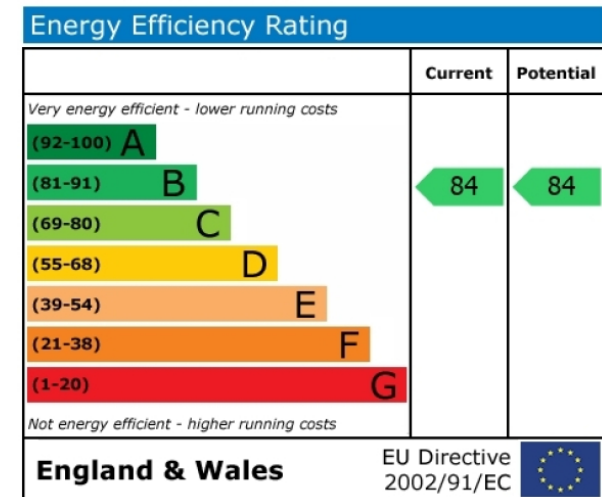
New Union Square, Nine Elms, SW11

£1,038 per week, £4,498 per month + fees

www.benhams.com



Floor Plan measurements are approximate and are for illustrative purposes only. While we do not doubt the floor plans accuracy, we make no guarantee, warranty or representation as to the accuracy and completeness of the floor plan.



London branches open six days a week Mon - Sat

Canary Wharf | City | Colindale | Dartmouth Park | Ealing | Fulham
Hammersmith | Hampstead | Highgate | Hyde Park | Kensington | Kew
Knightsbridge | Nine Elms | Shoreditch | Southall | Surrey Quays
Wapping | Wembley | White City | Woolwich

International offices

China | Hong Kong SAR | India | Indonesia | Qatar | Malaysia | Middle East | Pakistan
Singapore | South Africa | Thailand | Turkey



Benham & Reeves